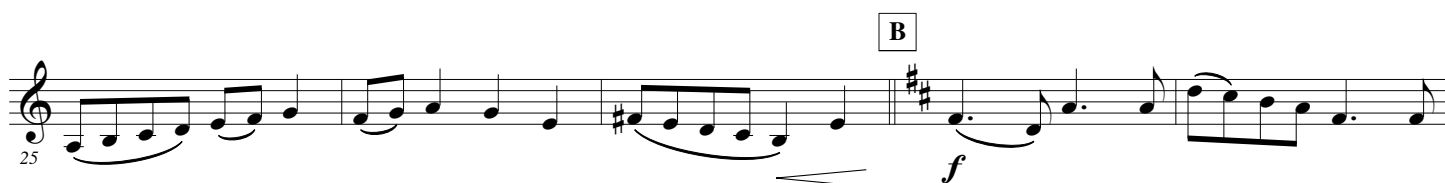
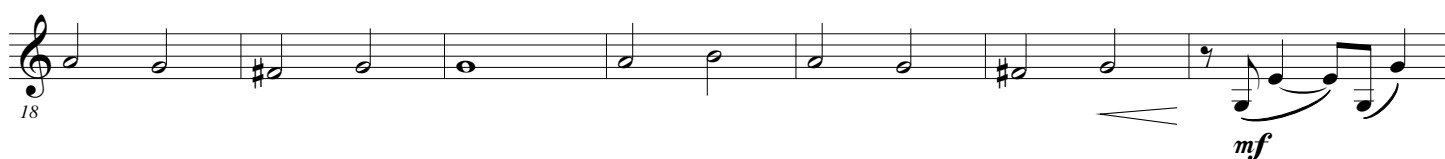
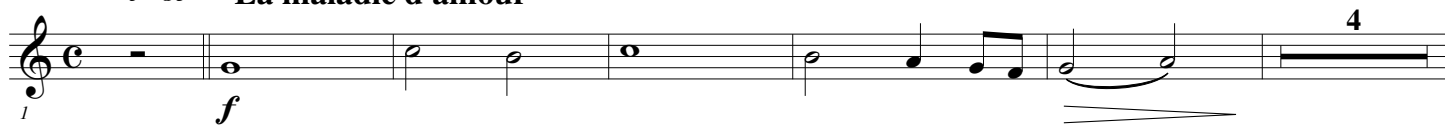


Michel SARDOU

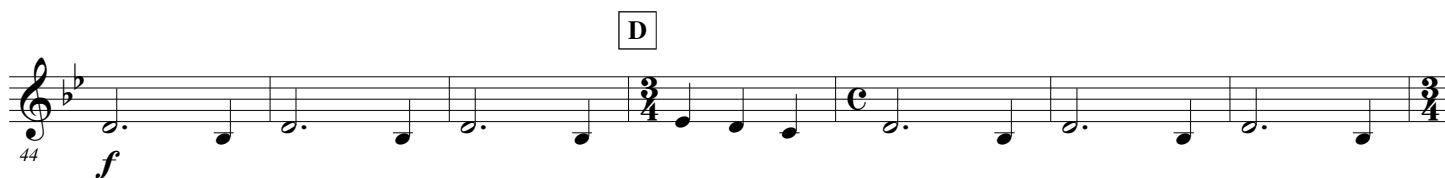
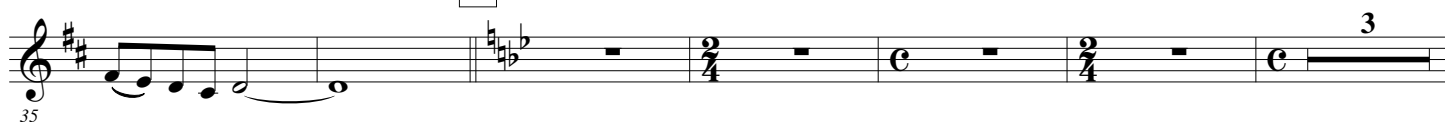
E \flat Horn 2

Arr. Maxime LEGAULOIS

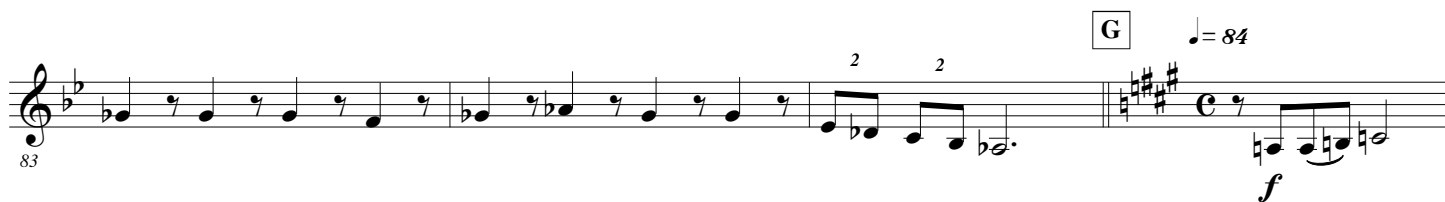
$\text{♩} = 80$ "La maladie d'amour"



C $\text{♩} = 92$ "Les lacs du Conemara"



2.

- E \flat Horn 2 -F $\text{♩} = 108$ G $\text{♩} = 84$ 

H



I

J ♩ = 100 "Etre une femme"

109 *mp* *mf*

115

K ♩ = 126

121 *f*

127

132 *mf* *mf*

L Clap hands

140 *ff*

M Play

149 *mf*

N

157 *mf*

O ♩ = 120
4

161

"Le rire du sergent"