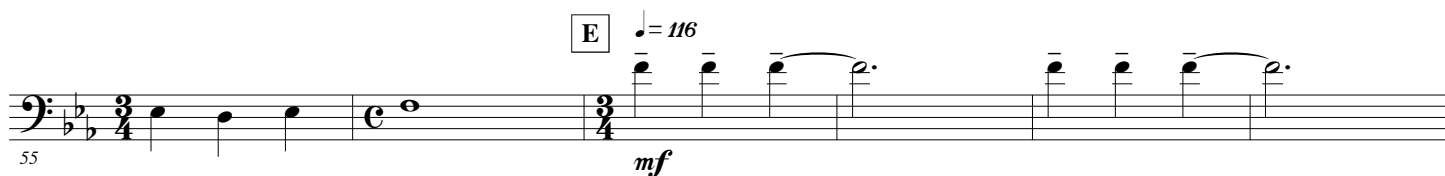
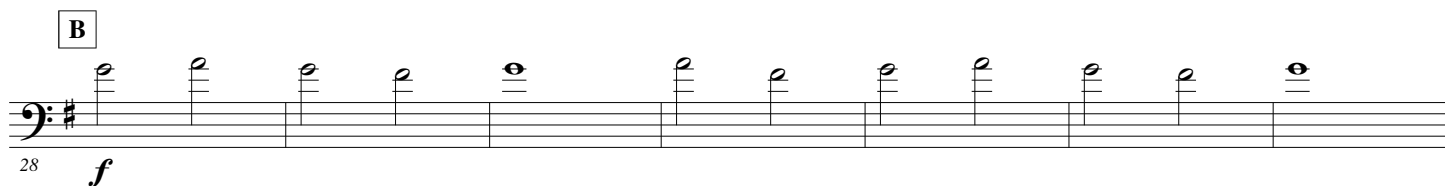
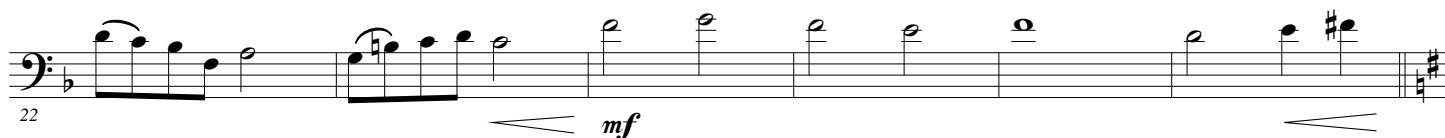
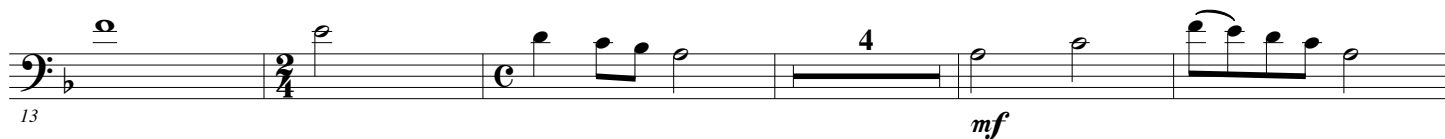
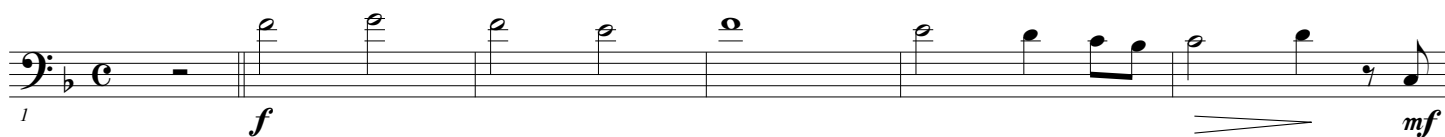


B \flat Trombone 1

Michel SARDOU

Arr. Maxime LEGAULOIS

$\text{♩} = 80$ "La maladie d'amour"



61

69

F $\text{♩} = 108$

73

77

81

85

G $\text{♩} = 84$

91

H

96

101

I

107

J $\text{♩} = 100$

"Etre une femme"

113 *mf*

119

K ♩ = 126
125 *mf*

131 *mf*

137 *f*

L
141

Clap hands
145 *ff* **M** Play *mf*

151

N
157 *mf*

163

0 $\text{♩} = 120$
3

f

171

177

f

P

2

mf

f

mf

192

Q

199

mf

206

mf

f

R

2

mf

f

mf

220

227

f