

B \flat Bass

GAYANEH

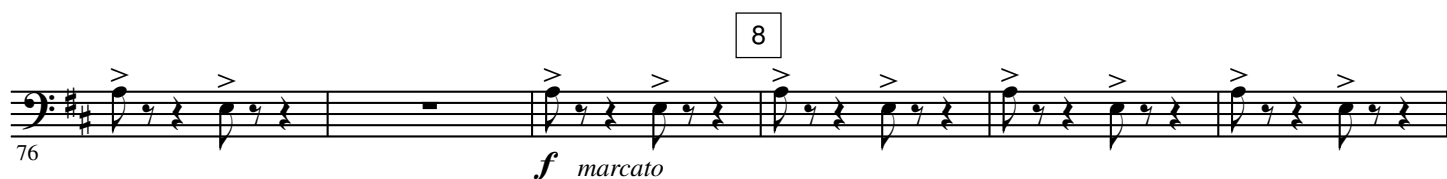
Suite from the Ballet

Aram KHACHATURIAN

Arranged by José SCHYNS

I. SABRE DANCE

Presto $\text{♩} = 184$



10 11

90 *f secco*

96

100 9

II. DANCE OF THE YOUNG MAIDENS

Allegro ♩ = 120

13 14 15 16 17 18 19

113 *f* *mf*

121

130 *f* *Soli*

136 *mf* *p*

142 *mf* *f* *ff* *mf*

150 *mp*

159 *ff* *f*

167 *mf* *ff*

20

174 *ff* *f*

21

182 *mf* *f* *ff*

Allegro ♩ = 108 - 112

III. MOUNTAINEERS' DANCE

one

188 *f*

22

194

23

200 *ff* *ff*

All one

206

24

25

26

211

27

28

218

29

225 *fff*

30

232 *ff*

one

238 *fff* ritard. All

IV. GOPAK

Presto $\text{♩} = 144 - 160$ 

Pesante

31 poco sostenuto



32



33



34



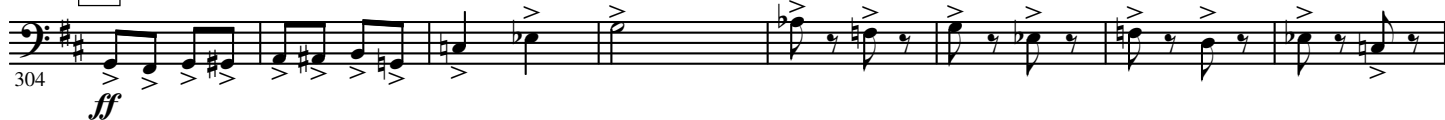
35 poco più mosso



36



37



38



39 Più mosso



40

41



338 42 *mf*

347 43 *ff* one

356 44

365 45 8 46 All *ff*

380 47 *ff*

388 48

396 49

405 50 51 *p*

414 52 *ff*

423 53

432 54 Presto *mf* *cresc. poco à poco*

441 Pesante *ff*

Allegretto

V. LULLABY

$\text{♩} = 152$ 55 3 poco accel. ritenuto 56 a tempo 57 11 58 *p*

484

492 *p* 59 div. *f*

500 ritard. 60 a tempo *f* ritard. 61 a tempo *f*

508 ritard.

62 a tempo

524 ritard. 63 Tempo I° 64 7 11 poco rit. 2 *p*

VI. LEZGHINKA

Allegro vivace $\text{♩} = 88 - 92$

548 *f* 65

556 66 67 68

565 69 70 *f*

574 71 72

583 73 74

ff *f*

Staff 583-591: Bass clef, key of D major. Measures 583-591. Measure 583 starts with a box labeled 73. Measure 591 ends with a box labeled 74. Dynamics: *ff* at measure 583, *f* at measure 591. Accents are present in measures 584, 585, 586, 587, 588, 589, 590, and 591.

592 75

Staff 592-599: Bass clef, key of D major. Measures 592-599. Measure 592 starts with a box labeled 75. Dynamics: *f* at measure 592. Accents are present in measures 593, 594, 595, 596, 597, 598, and 599.

600 76

Staff 600-606: Bass clef, key of D major. Measures 600-606. Measure 600 starts with a box labeled 76. Dynamics: *f* at measure 600. Accents are present in measures 601, 602, 603, 604, 605, and 606.

607 77 78

f *ff*

Staff 607-614: Bass clef, key of D major. Measures 607-614. Measure 607 starts with a box labeled 77. Measure 614 ends with a box labeled 78. Dynamics: *f* at measure 607, *ff* at measure 614. A slur connects measures 607 to 614. Accents are present in measures 608, 609, 610, 611, 612, 613, and 614.

615 79

f

Staff 615-622: Bass clef, key of D major. Measures 615-622. Measure 615 starts with a box labeled 79. Dynamics: *f* at measure 615. Accents are present in measures 616, 617, 618, 619, 620, 621, and 622.

623 80 81

f

Staff 623-630: Bass clef, key of D major. Measures 623-630. Measure 623 starts with a box labeled 80. Measure 630 ends with a box labeled 81. Dynamics: *f* at measure 623. Accents are present in measures 624, 625, 626, 627, 628, 629, and 630.

632 82 83 84

Staff 632-640: Bass clef, key of D major. Measures 632-640. Measure 632 starts with a box labeled 82. Measure 640 ends with a box labeled 84. Dynamics: *f* at measure 632. Accents are present in measures 633, 634, 635, 636, 637, 638, 639, and 640.

641 85 86

f

Staff 641-648: Bass clef, key of D major. Measures 641-648. Measure 641 starts with a box labeled 85. Measure 648 ends with a box labeled 86. Dynamics: *f* at measure 641. Accents are present in measures 642, 643, 644, 645, 646, 647, and 648.

650 87 88

Staff 650-657: Bass clef, key of D major. Measures 650-657. Measure 650 starts with a box labeled 87. Measure 657 ends with a box labeled 88. Dynamics: *f* at measure 650. Accents are present in measures 651, 652, 653, 654, 655, 656, and 657.

659 89 90

ff

Staff 659-666: Bass clef, key of D major. Measures 659-666. Measure 659 starts with a box labeled 89. Measure 666 ends with a box labeled 90. Dynamics: *ff* at measure 659. Accents are present in measures 660, 661, 662, 663, 664, 665, and 666.

668 91

Staff 668-675: Bass clef, key of D major. Measures 668-675. Measure 668 starts with a box labeled 91. Measure 675 ends with a box labeled 91. Dynamics: *f* at measure 668. Accents are present in measures 669, 670, 671, 672, 673, 674, and 675.