

**B $\flat$  Euphonium**

# GAYANEH

Suite from the Ballet

**Aram KHACHATURIAN**

Arranged by José SCHYNS

## I. SABRE DANCE

**Presto** ♩ = 184

1 *f marcato* *mf*

7

13

3 *f*

19

25

4

31

5 16 6 15

66 *f*

72

8

77 *f marcato*

9

83 2

10

90 *f secco*

11

96

12

101 *f*

*Cue Cello*

107 *mf sf*

## II. DANCE OF THE YOUNG MAIDENS

**Allegro** ♩ = 120

*Play*

113 *f marcato*

13

*mf*

119

14

127

15

*f*

*Soli*

134 *mf*

16



17



18



19



20



21

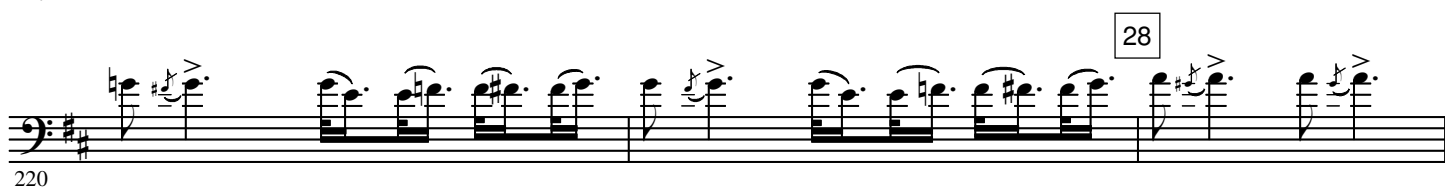
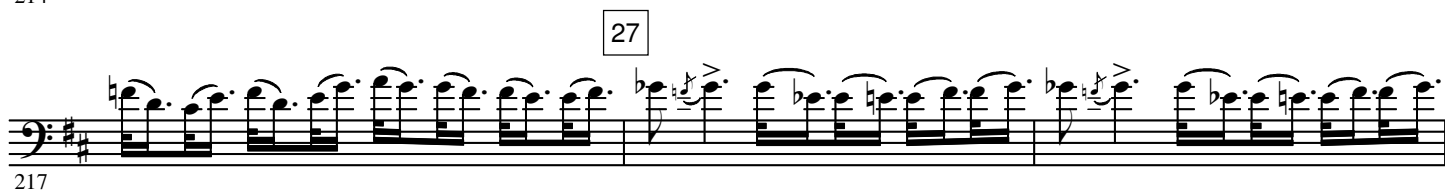
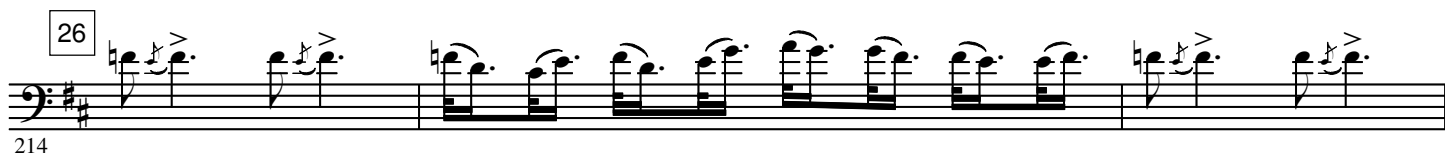


### III. MOUNTAINEERS' DANCE

Allegro ♩ = 108 - 112

22





## IV. GOPAK

Presto ♩ = 144 - 160

244 *mf* *cresc. poco à poco*

252 *ff* *Pesante* *poco sostenuto*

288 *poco più mosso* *ff*

310 *ff*

318 *Più mosso*

326

334

342 *mf*

350 *ff*

358

46

373

*ff*

47

381

*ff*

48

389

49

397

50

405

51

*p*

52

414

*ff*

53

423

54

**Presto**

432

*mf* *cresc. poco à poco*

**Pesante**

441

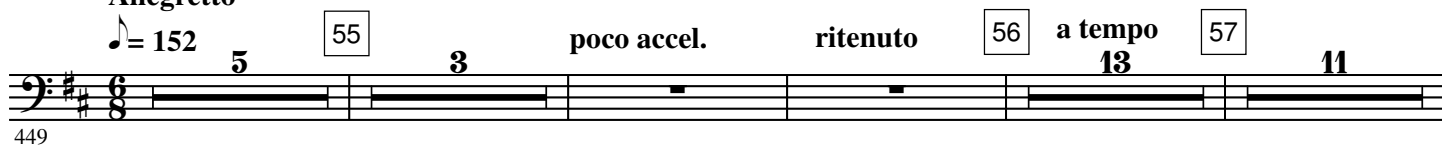
*ff*

# V. LULLABY

Allegretto

$\text{♩} = 152$

55 **5** **3** poco accel. ritenuto 56 **13** a tempo 57 **11**



449

58 **6** div. *Two players* *mf* *p*



483

59 All *f* ritard.



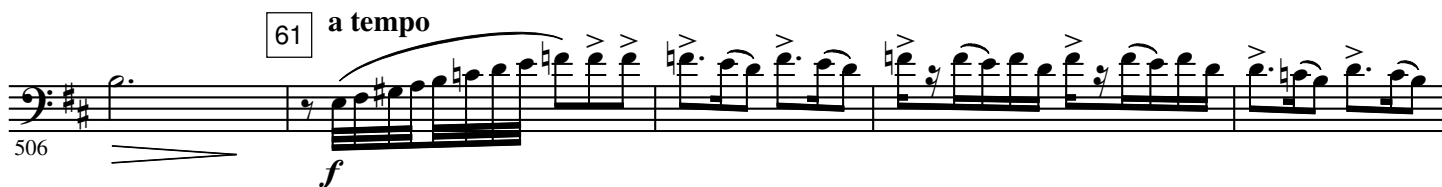
495

60 a tempo *f* ritard.



501

61 a tempo *f*



506

62 a tempo ritard.



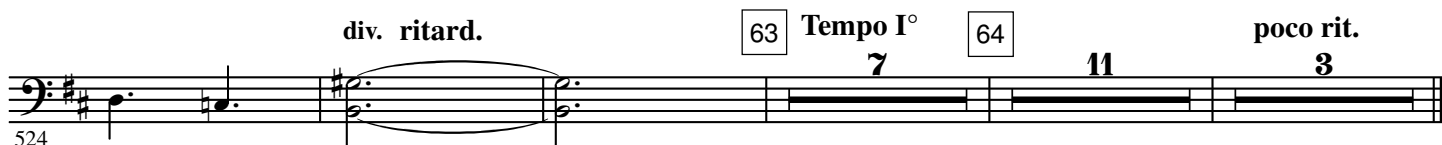
511

517



517

div. ritard. 63 Tempo I° 64 **7** **11** poco rit. **3**



524

## VI. LEZGHINKA

Allegro vivace  $\text{♩} = 88 - 92$ 

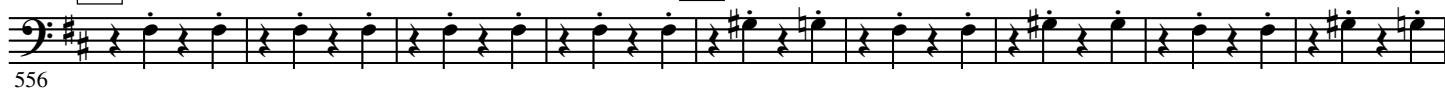
65



66

67

68



69



70



71

72



73



74



75



76



77





609 78

612 *ff*

Detailed description: This staff contains measures 609 to 612. It features a series of eighth-note triplets in a descending melodic line. Measure 609 starts with a flat on the first eighth note. Measure 612 ends with a double fermata. The dynamic *ff* is indicated at the end of the staff.

613 79

616

Detailed description: This staff contains measures 613 to 616. It continues the eighth-note triplet pattern. Measure 613 has a flat on the first eighth note. Measure 616 ends with a double fermata.

618

621

Detailed description: This staff contains measures 618 to 621. It continues the eighth-note triplet pattern. Measure 621 ends with a double fermata.

622 80

625

Detailed description: This staff contains measures 622 to 625. It continues the eighth-note triplet pattern. Measure 625 ends with a double fermata.

626 81 82

632 *f*

Detailed description: This staff contains measures 626 to 632. Measures 626-630 continue the eighth-note triplet pattern. Measure 631 has a double fermata. Measure 632 is a whole note chord with a dynamic *f* marking.

633 83 84

642

Detailed description: This staff contains measures 633 to 642. Measures 633-641 are whole notes, mostly with accidentals. Measure 642 is a whole note chord with a sharp on the second line.

643 85 86

649 *f*

Detailed description: This staff contains measures 643 to 649. Measures 643-648 are whole notes with accidentals. Measure 649 is a triplet of eighth notes with a dynamic *f* marking.

650 87

654

Detailed description: This staff contains measures 650 to 654. All measures consist of eighth-note triplets.

655 88

659

Detailed description: This staff contains measures 655 to 659. All measures consist of eighth-note triplets.

660 89 90

666 *ff*

Detailed description: This staff contains measures 660 to 666. Measures 660-665 are eighth-note triplets. Measure 666 is a whole note chord with a dynamic *ff* marking.

667 91

670

Detailed description: This staff contains measures 667 to 670. Measures 667-669 are eighth-note triplets. Measure 670 is a whole note chord.