

# The Skaters' Waltz

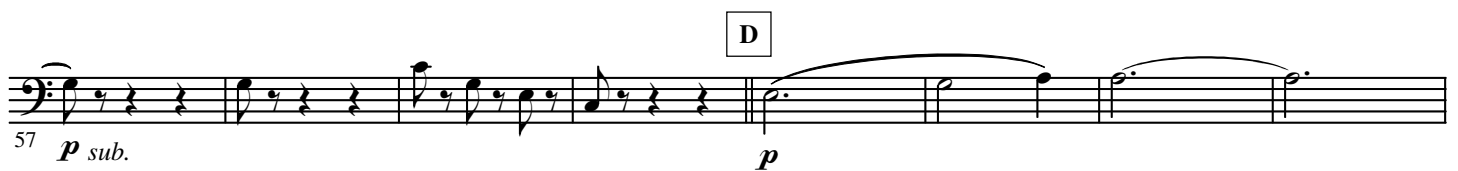
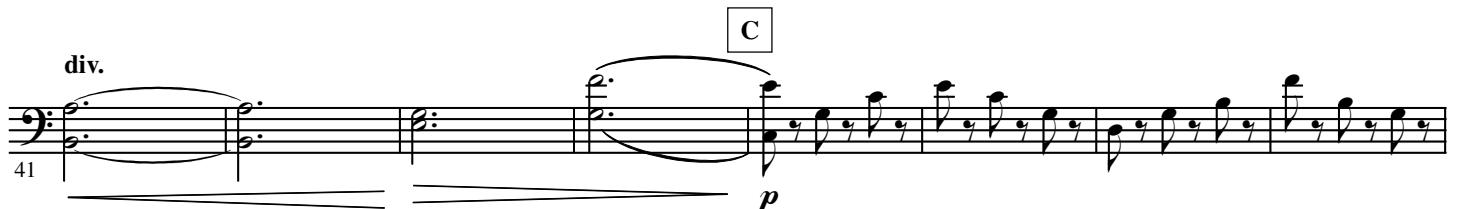
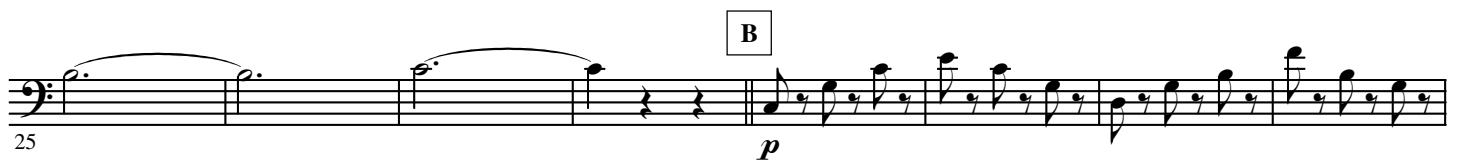
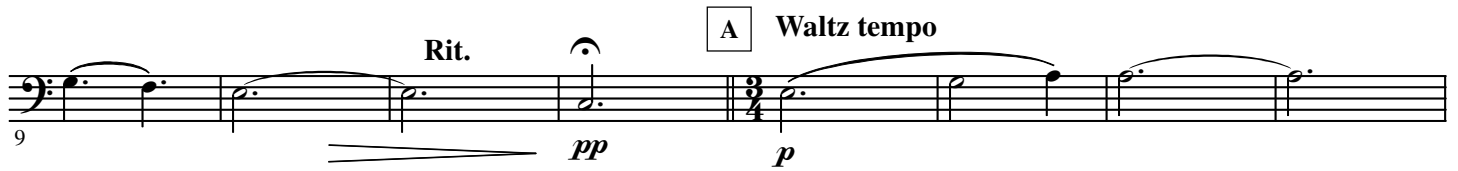
B $\flat$  Euphonium

(Valse des Patineurs) - Excerpts

Emile WALDTEUFEL

Arranged by Yo KITANO

Andante  $\text{♩} = \pm 72$



81

89

*p*

F

97

105

*f*

G

The musical score for the bass line of 'The Rose Tree' begins at measure 105. It features a series of eighth notes with a dotted quarter note, followed by a half note, and then a quarter note. The melody is marked with a forte (*f*) dynamic and a 'G' time signature. The notation includes a double bar line and a repeat sign.

113

121

The musical score for the bass line of 'The Rose Tree' is written on a single staff. It begins with a treble clef and a key signature of one flat (B-flat). The melody consists of eighth and quarter notes. A double bar line is followed by a box containing the letter 'H'. After this, there are two measures with a half note each, connected by a slur. The final measure contains a half note with a 'div.' (diviso) marking above it, indicating a double bar line. The piece concludes with a final double bar line. The dynamic marking 'p' (piano) is placed below the staff.

137

The musical score for the bass line of 'The Rose Tree' is shown. It begins with a treble clef and a key signature of one sharp (F#). The melody starts on a whole note G4, followed by a half note A4, and then a half note B4. A slur covers the next three notes: a half note C5, a half note D5, and a half note E5. This is followed by a half note F#5, a half note G5, and a half note A5. A final slur covers the last three notes: a half note B5, a half note C6, and a half note D6. The score ends with a double bar line.

[illegible]

159

*f*

J

2

167 *mf amabile*

175 *sf* K **Risoluto** *ff*

182

L 189 *p*

197

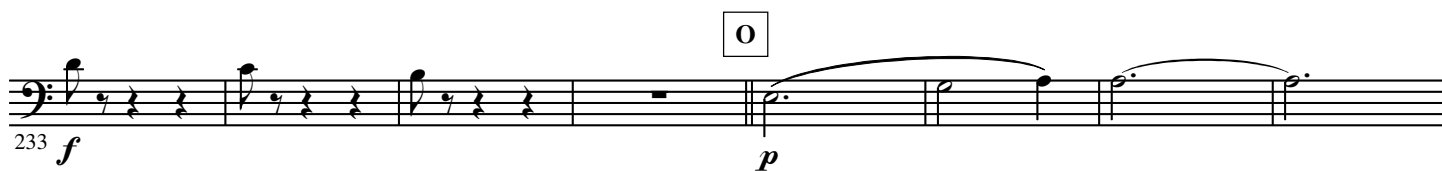
M 205 *p*

212 *div.*

N 219 *f* *p*

226 *f* *p*

233 *f* O *p*



241



248 P **Grandioso** *ff*



255



263



Q 271



279 >

