



# Turkish delight

Tuba in Eb

Suzanne WELTERS

$\text{♩} = 100$  A  $\text{♩} = 90$

*fp* *mf*

B

*mp*

C

*f*

D

*mp*

E  $\text{♩} = 90$  F  $\text{♩} = 90$

*p* *p* *Cadenza*

*cresc. poco a poco*

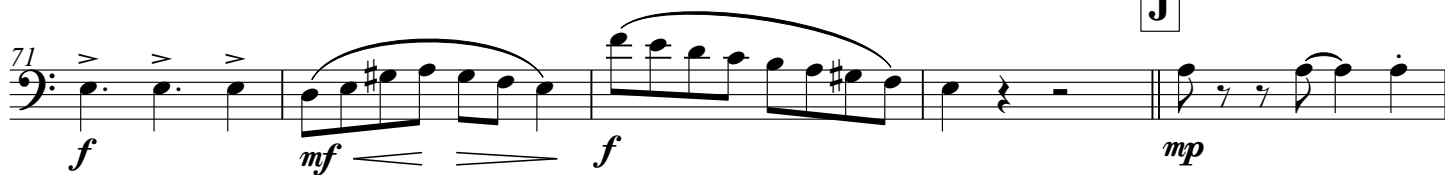
G

*f*

## Tuba in Eb

2

52

**H****I****J****K****L****M**