

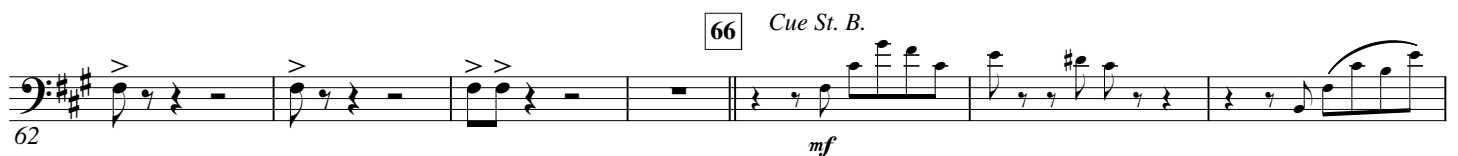
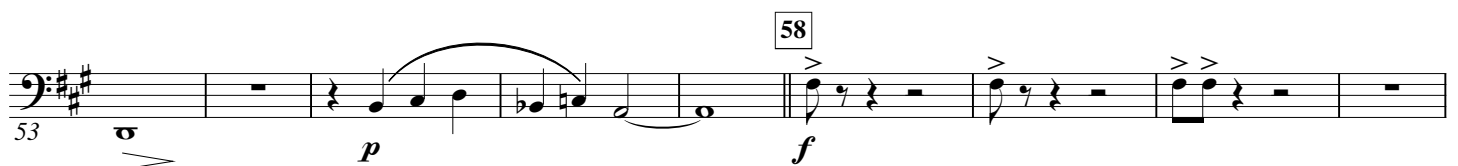
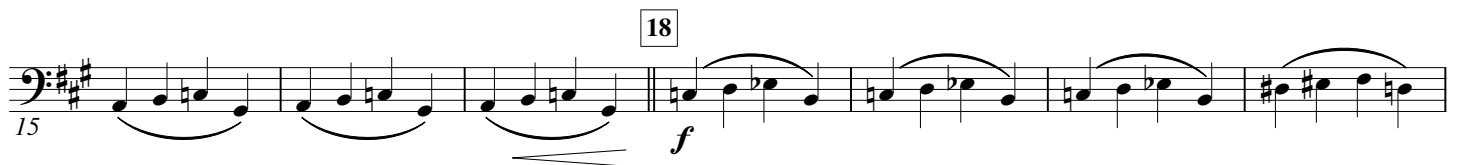
E \flat Bass

Les Cités obscures

d'après l'œuvre de François SCHUITEN

Benoît CHANTRY

Un poco largo (♩ = 66)



93 *mf*

101 *cresc. poco a poco*

113 116 6 ($\text{♩} = \text{♩}$) *f* *dim.*

128 129 *mf* *p* molto rall. A tempo Affettuoso ($\text{♩} = 69$)

140 *cresc. poco a poco* *mf* *cresc. poco a poco*

152 157 *Rit.* *A tempo* *p sub.* *mf*

168 171 7 *Energico* ($\text{♩} = 136$) (in 2 ad lib.) *f*

182 185 *f*

191

198 201 *poco cresc.*

207 211 2 *dim.* *mf* *f*

219 222

dim. f *dim.*

230 232 242

mf f

246 252

cresc. f

256 262

f *dim.*

270 275

mf f *poco rit.*

293 **A tempo**

mp *cresc. poco a poco*

Poco più mosso (♩. = 108)

302 21

mf *poco f*

333

331 *dim.* mf

345

cresc. poco a poco

359 373

$\text{mf}_{\text{sub.}}$ ff f

378

f f *cresc.* ff