

E \flat Tuba

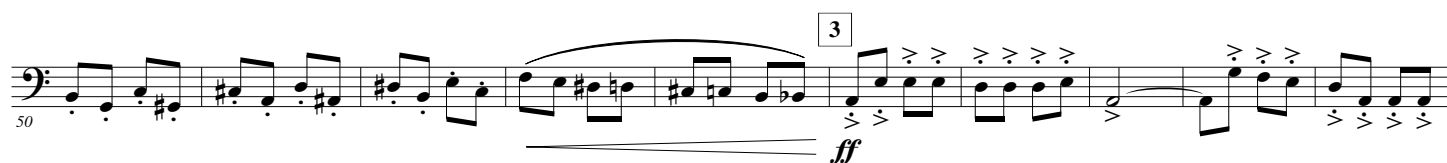
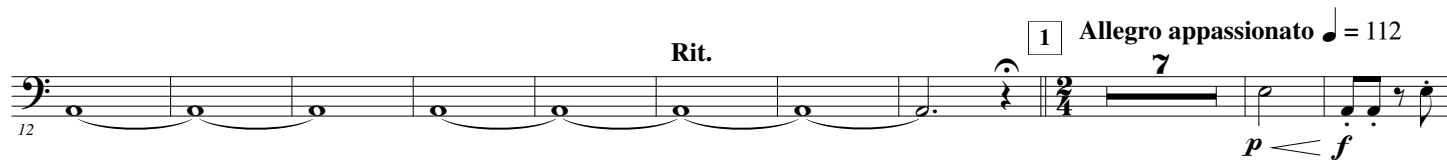
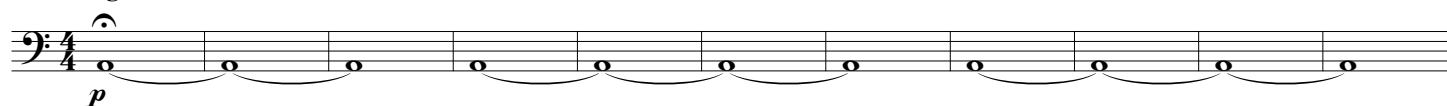
The Land of Zarathustra

Amir MOLOOKPOUR

1. - Ahuramazda and Ahriman

Adagio sostenuto $\text{♩} = 66$

The Inner Battle



Rit. 7 Allegro appassionato ♩ = 112

113

pp

7

Detailed description: This block contains the first musical staff, measures 113 to 130. It begins with a 'Rit.' (Ritardando) marking. At measure 120, there is a boxed number '7' followed by the tempo 'Allegro appassionato' and a quarter note equal to 112. The staff features a series of eighth notes with accents, followed by a half note. A dynamic marking 'pp' (pianissimo) is placed below the staff. A fermata is shown over the final measure (130), which contains a whole note G.

130

p

mf

Detailed description: This block contains the second musical staff, measures 130 to 142. It starts with a dynamic marking 'p' (piano) at measure 130. The staff contains a series of half notes with long horizontal lines above them, indicating a sustained or glissando effect. A dynamic marking 'mf' (mezzo-forte) appears at the end of the staff.

8

142

f

Detailed description: This block contains the third musical staff, measures 142 to 152. It begins with a boxed number '8'. The staff features a series of eighth notes with accents, followed by a half note. A dynamic marking 'f' (forte) is placed below the staff.

Rit.

152

ff

3

3

Detailed description: This block contains the fourth musical staff, measures 152 to 162. It starts with a 'Rit.' marking. The staff features a series of eighth notes with accents, followed by a half note. A dynamic marking 'ff' (fortissimo) is placed below the staff. At the end of the staff, there are two groups of three eighth notes, each with a bracket underneath.

9 Maestoso ♩ = 100

162

f

Detailed description: This block contains the fifth musical staff, measures 162 to 170. It begins with a boxed number '9' followed by the tempo 'Maestoso' and a quarter note equal to 100. The staff features a series of half notes with long horizontal lines above them. A dynamic marking 'f' (forte) is placed below the staff.

Rit. a tempo Rit.

170

fff

Detailed description: This block contains the sixth musical staff, measures 170 to 179. It starts with a 'Rit.' marking, followed by 'a tempo', and then another 'Rit.' marking. The staff features a series of half notes with long horizontal lines above them. A dynamic marking 'fff' (fortississimo) is placed below the staff.

10 Moderato ♩ = 90

179

pp

Detailed description: This block contains the seventh musical staff, measures 179 to 188. It begins with a boxed number '10' followed by the tempo 'Moderato' and a quarter note equal to 90. The staff features a series of half notes with long horizontal lines above them. A dynamic marking 'pp' (pianissimo) is placed below the staff.

11 Allegro appassionato ♩ = 112

188

pppp

p

Detailed description: This block contains the eighth musical staff, measures 188 to 200. It begins with a boxed number '11' followed by the tempo 'Allegro appassionato' and a quarter note equal to 112. The staff features a series of half notes with long horizontal lines above them. Dynamic markings 'pppp' (pianississimo) and 'p' (piano) are placed below the staff.

accel.

200

mf

mp

12 più mosso ♩ = 120

ff

Detailed description: This block contains the ninth musical staff, measures 200 to 214. It starts with an 'accel.' (accelerando) marking. The staff features a series of half notes with long horizontal lines above them. Dynamic markings 'mf' (mezzo-forte), 'mp' (mezzo-piano), and 'ff' (fortissimo) are placed below the staff. At the end of the staff, there is a boxed number '12' followed by the tempo 'più mosso' and a quarter note equal to 120.

214

ff

Detailed description: This block contains the tenth musical staff, measures 214 to 226. It features a series of eighth notes with accents, followed by a half note. A dynamic marking 'ff' (fortissimo) is placed below the staff.

Rit.

226

fp

ff

p

ff

p

ff

pp

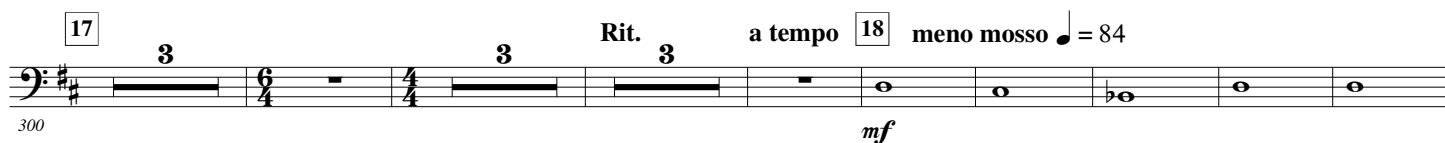
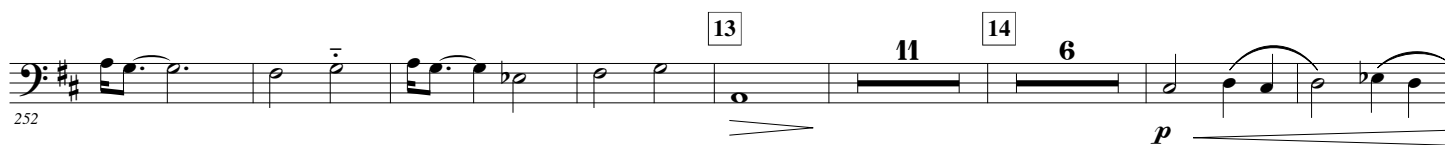
ff

Detailed description: This block contains the eleventh musical staff, measures 226 to 235. It starts with a 'Rit.' marking. The staff features a series of half notes with long horizontal lines above them. Dynamic markings 'fp' (fortissimo-piano), 'ff' (fortissimo), 'p' (piano), 'ff' (fortissimo), 'p' (piano), 'ff' (fortissimo), 'pp' (pianissimo), and 'ff' (fortissimo) are placed below the staff.

2. - The Fire Temple

Zarathustra's Prayers

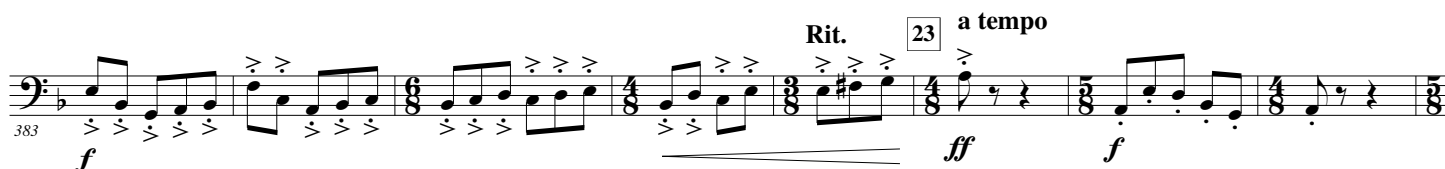
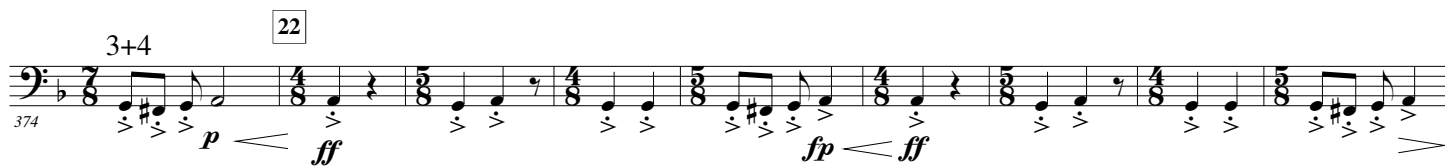
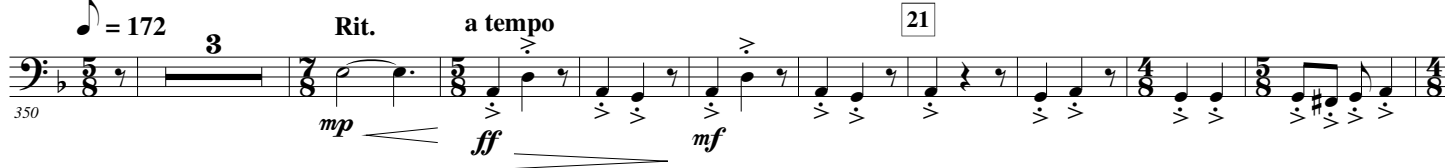
Moderato ♩ = 96



3. - Gahanbars

The Persian Festivities

♩ = 172



391 24

391 400

Staff 391-400: Bass clef, key of B-flat. Measures 391-400. Measure 391 has a 3/8 time signature. Measures 392-393 have a 4/4 time signature. Measures 394-395 have a 3/8 time signature. Measures 396-397 have a 4/4 time signature. Measures 398-399 have a 3/8 time signature. Measure 400 has a 4/4 time signature. The staff contains eighth and quarter notes with various articulations.

399 25

399 408

Staff 399-408: Bass clef, key of B-flat. Measures 399-408. Measure 399 has a 3/8 time signature. Measures 400-401 have a 4/4 time signature. Measures 402-403 have a 3/8 time signature. Measures 404-405 have a 4/4 time signature. Measures 406-407 have a 3/8 time signature. Measure 408 has a 4/4 time signature. The staff contains eighth and quarter notes with various articulations. A double bar line is present in measure 406.

409 26

409 418

Staff 409-418: Bass clef, key of B-flat. Measures 409-418. Measure 409 has a 3/8 time signature. Measures 410-411 have a 4/4 time signature. Measures 412-413 have a 3/8 time signature. Measures 414-415 have a 4/4 time signature. Measures 416-417 have a 3/8 time signature. Measure 418 has a 4/4 time signature. The staff contains eighth and quarter notes with various articulations. A double bar line is present in measure 414.

417 27

417 426

Staff 417-426: Bass clef, key of B-flat. Measures 417-426. Measure 417 has a 3/8 time signature. Measures 418-419 have a 4/4 time signature. Measures 420-421 have a 3/8 time signature. Measures 422-423 have a 4/4 time signature. Measures 424-425 have a 3/8 time signature. Measure 426 has a 4/4 time signature. The staff contains eighth and quarter notes with various articulations. A double bar line is present in measure 422.

425 28

425 434

Staff 425-434: Bass clef, key of B-flat. Measures 425-434. Measure 425 has a 3/8 time signature. Measures 426-427 have a 4/4 time signature. Measures 428-429 have a 3/8 time signature. Measures 430-431 have a 4/4 time signature. Measures 432-433 have a 3/8 time signature. Measure 434 has a 4/4 time signature. The staff contains eighth and quarter notes with various articulations. A double bar line is present in measure 430.

433 29

433 442

Staff 433-442: Bass clef, key of B-flat. Measures 433-442. Measure 433 has a 3/8 time signature. Measures 434-435 have a 4/4 time signature. Measures 436-437 have a 3/8 time signature. Measures 438-439 have a 4/4 time signature. Measures 440-441 have a 3/8 time signature. Measure 442 has a 4/4 time signature. The staff contains eighth and quarter notes with various articulations. A double bar line is present in measure 438.

442 30 Allegro ♩ = 110

442 451

Staff 442-451: Bass clef, key of B-flat. Measures 442-451. Measure 442 has a 3/8 time signature. Measures 443-444 have a 4/4 time signature. Measures 445-446 have a 3/8 time signature. Measures 447-448 have a 4/4 time signature. Measures 449-450 have a 3/8 time signature. Measure 451 has a 4/4 time signature. The staff contains eighth and quarter notes with various articulations. A double bar line is present in measure 447.

452 31 Rall.

452 461

Staff 452-461: Bass clef, key of B-flat. Measures 452-461. Measure 452 has a 3/8 time signature. Measures 453-454 have a 4/4 time signature. Measures 455-456 have a 3/8 time signature. Measures 457-458 have a 4/4 time signature. Measures 459-460 have a 3/8 time signature. Measure 461 has a 4/4 time signature. The staff contains eighth and quarter notes with various articulations. A double bar line is present in measure 457.

463 32 Maestoso ♩ = 100

463 472

Staff 463-472: Bass clef, key of B-flat. Measures 463-472. Measure 463 has a 3/8 time signature. Measures 464-465 have a 4/4 time signature. Measures 466-467 have a 3/8 time signature. Measures 468-469 have a 4/4 time signature. Measures 470-471 have a 3/8 time signature. Measure 472 has a 4/4 time signature. The staff contains eighth and quarter notes with various articulations. A double bar line is present in measure 468.

472 33 Rit. a tempo

472 481

Staff 472-481: Bass clef, key of B-flat. Measures 472-481. Measure 472 has a 3/8 time signature. Measures 473-474 have a 4/4 time signature. Measures 475-476 have a 3/8 time signature. Measures 477-478 have a 4/4 time signature. Measures 479-480 have a 3/8 time signature. Measure 481 has a 4/4 time signature. The staff contains eighth and quarter notes with various articulations. A double bar line is present in measure 477.

484 34 Rit.

484 493

Staff 484-493: Bass clef, key of B-flat. Measures 484-493. Measure 484 has a 3/8 time signature. Measures 485-486 have a 4/4 time signature. Measures 487-488 have a 3/8 time signature. Measures 489-490 have a 4/4 time signature. Measures 491-492 have a 3/8 time signature. Measure 493 has a 4/4 time signature. The staff contains eighth and quarter notes with various articulations. A double bar line is present in measure 489.