

B \flat Bass Trombone

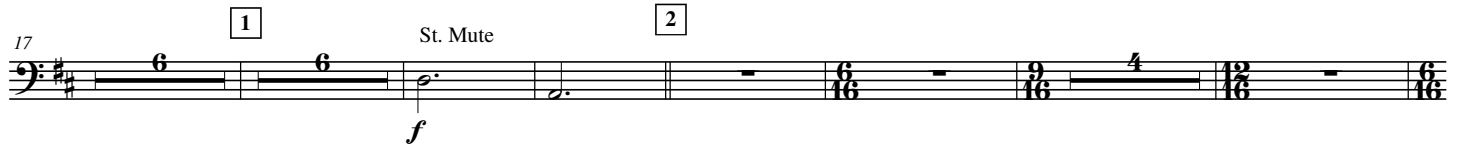
Symphonia Japanesque

Yosuke FUKUDA

1. WARABE-UTA

Children Songs

Allegro scherzando ($\text{♩} = 152$)



6 Andante semplice ($\text{♩} = 60$)



2.

- B \flat Bass Trombone -

95 7 St. Mute *p*

100 8 Cup Mute *dim. pp* *p*

108 *poco rit.*

116 9 a tempo *mp* Open *rit.*

128 10 Vivace con brio (♩. = 168) St. Mute *f* *f*

138 Open *ff* *f*

146 *ff*

151 11 *mf*

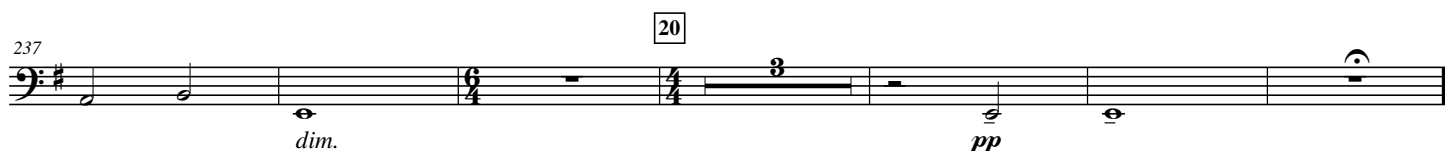
156 *ff* *mf* *ff*



2.CHINJU-NO-MORI

Ancient forest

Adagio teneramente (♩ = 56)



3.MATSURI

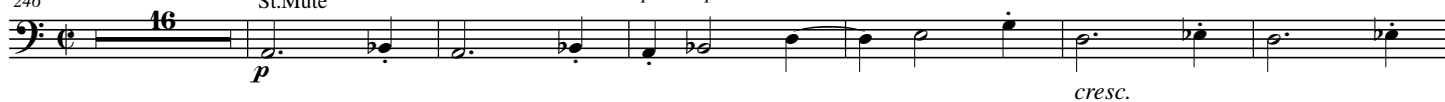
Festive

[21]

Allegretto scherzando ($\text{♩} = 80$)

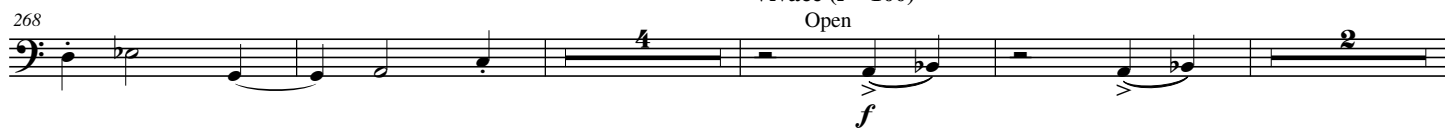
246

St.Mute

poco a poco accel.Vivace ($\text{♩} = 100$)

268

Open



278

[22] Allegretto con brio ($\text{♩} = 100$)

288

marcato

292

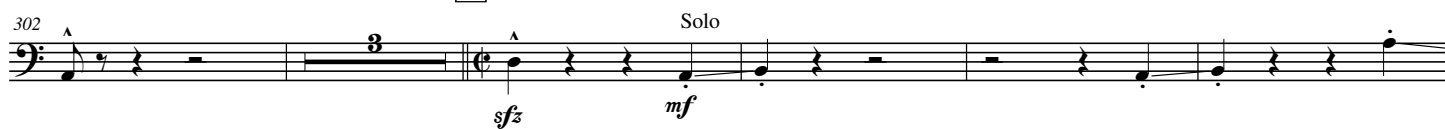


297

[23] Tempo Primo ($\text{♩} = 80$)

302

Solo

[24] Allegretto giocoso ($\text{♩} = 104$)

310



[25]

330

Open

*marcato**poco a poco accel.*

340

[26] Allegro (♩ = 132)

ff

348

poco riten.

[27] Allegretto con brio (♩ = 100)

356

ff

361

mp

365

p

370

cresc.

[28]

f

374

379

ff

384

[29] Espressivo (♩ = 96)

sfz

6.

- B^b Bass Trombone -

395

mf *cresc.*

401

30 Vivace (♩ = 100)

f *cresc.* *ff*

406

stringendo (♩ = 138)

stringendo

412

31 Allegro vivace (♩ = 148)

ff

420

32 Con tutta forza e stringendo

fff

428

Presto (♩ = 160)

Presto

435

(Hand Clap!)

Grandioso (♩ = 40)

ff *mf* *fff*