

**B $\flat$  Bass Trombone**

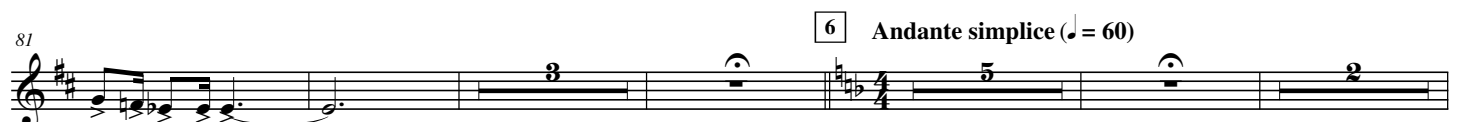
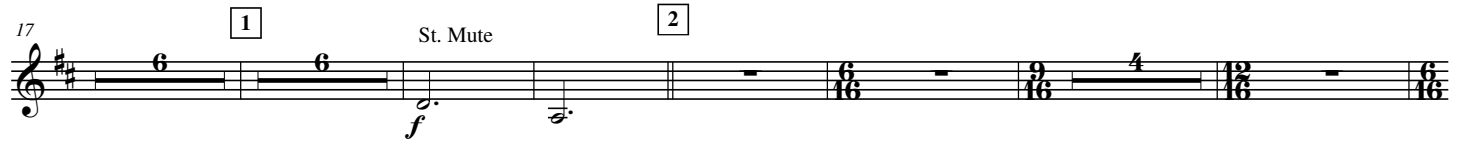
# Symphonia Japanesque

Yosuke FUKUDA

## 1. WARABE-UTA

*Children Songs*

**Allegro scherzando** (♩ = 152)



2.

- B $\flat$  Bass Trombone -

95 7 St. Mute

*p*

100 8 Cup Mute

*dim. pp* *p*

108 *poco rit.*

116 9 a tempo Open *rit.*

*mp*

128 10 Vivace con brio (♩. = 168) St. Mute

*f* *f*

138 Open

*ff* *f*

146

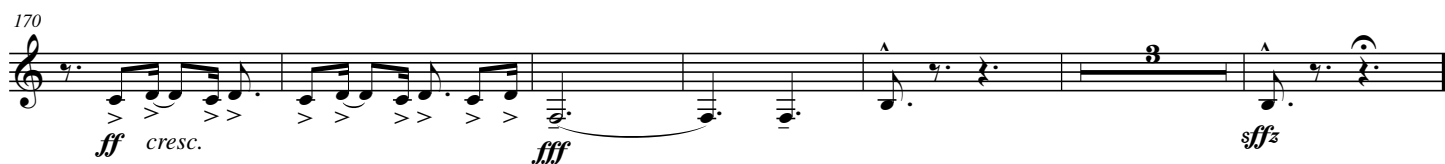
*ff*

151 11

*mf*

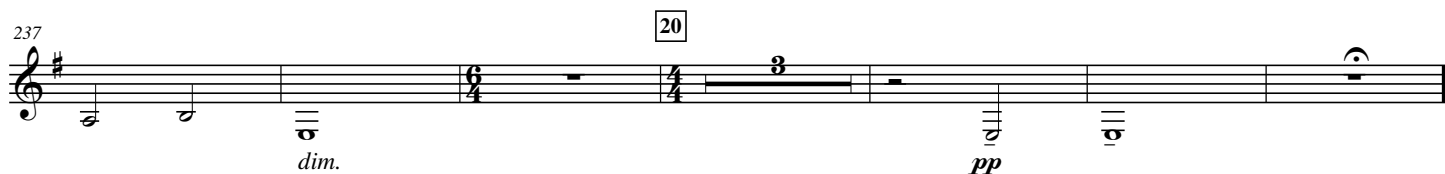
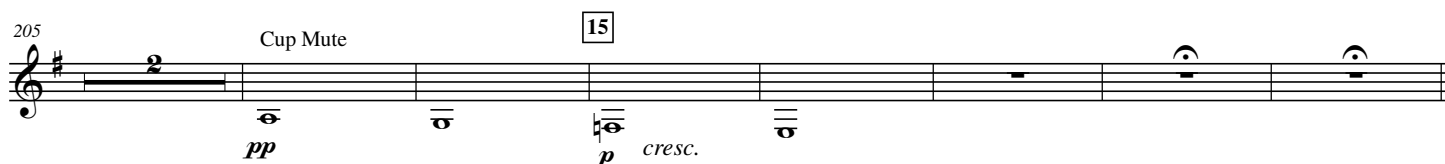
156

*ff* *mf* *ff*



## 2.CHINJU-NO-MORI

*Ancient forest*



# 3.MATSURI

## Festive

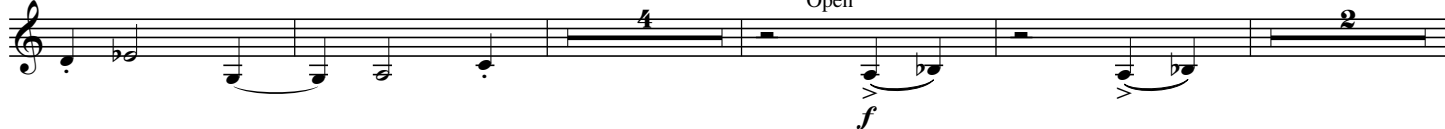
[21]

246 **Allegretto scherzando** ( $\text{♩} = 80$ )

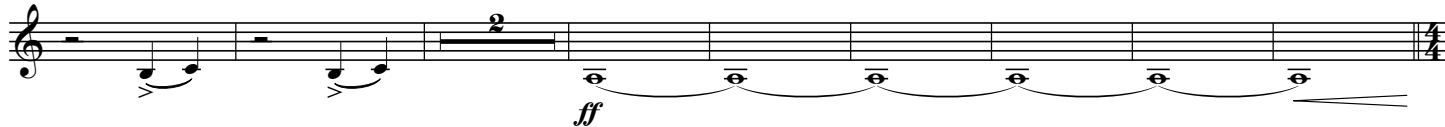
St.Mute

*poco a poco accel.*268 **Vivace** ( $\text{♩} = 100$ )

Open



278

288 [22] **Allegretto con brio** ( $\text{♩} = 100$ )*marcato*

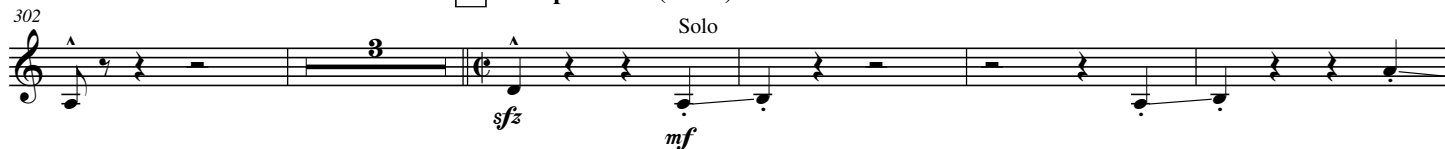
292



297

[23] **Tempo Primo** ( $\text{♩} = 80$ )

Solo



310

[24] **Allegretto giocoso** ( $\text{♩} = 104$ )

[25]

330 Open *marcato* *poco a poco accel.*

340 26 Allegro (♩ = 132)

*ff*

348 *poco riten.*

*poco riten.*

356 27 Allegretto con brio (♩ = 100)

*ff*

361

*mp*

365

*p*

370 28

*cresc.* *f*

374

379

*ff*

384 29 Espressivo (♩ = 96)

*sfz*

395

*mf* *cresc.*

401

[30] Vivace (♩ = 100)

*f* *cresc.* *ff*

406 *stringendo* (♩ = 138)

*stringendo*

412 [31] Allegro vivace (♩ = 148)

*ff*

420 [32] Con tutta forza e stringendo

*fff*

428 Presto (♩ = 160)

*Presto*

435 (Hand Clap!)

Grandioso (♩ = 40)

*ff* *mf* *fff*