

**B $\flat$  Euphonium**

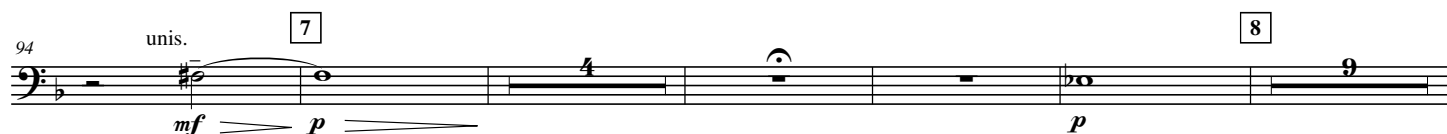
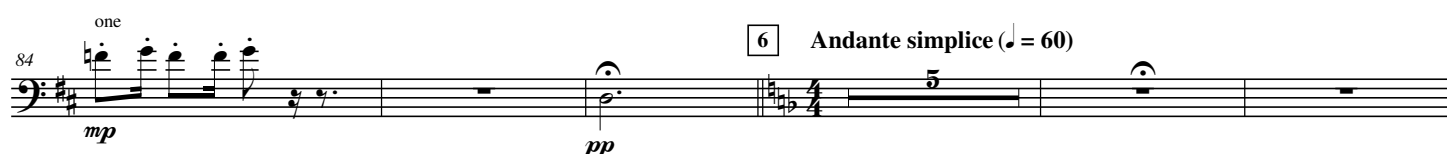
# Symphonia Japanesque

Yosuke FUKUDA

## 1. WARABE-UTA

*Children Songs*

**Allegro scherzando** ( $\text{♩} = 152$ )



2.

- B $\flat$  Euphonium -

112 *poco rit.* 9 *a tempo*

118 *rit.*

125 10 *Vivace con brio* ( $\text{♩} = 168$ )

137

148 11

159 *ff*

164 12

170 *ff cresc.* *fff* *sfz*

## 2.CHINJU-NO-MORI

*Ancient forest*

*Adagio teneramente* ( $\text{♩} = 56$ )

179 *pp* *mp*

189 13 **Maestoso**

*p* *mp*

196 14 **Pregando**

*dim.* *pp*

202 15

*p* *pp* *pp* *p cresc.*

210 16 *rall.*

*mf* *dim.* *p*

17 **a tempo con moto espressivo**

*poco cresc.*

225 *allarg.* 18 **a tempo maestoso**

*f* *ff*

231 19

*f*

237 20

*dim.* *mp* *pp*

### 3.MATSURI

*Festive*

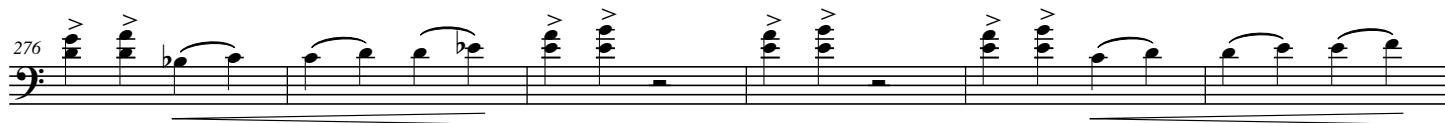
**Allegretto scherzando** ( $\text{♩} = 80$ )

*mp*

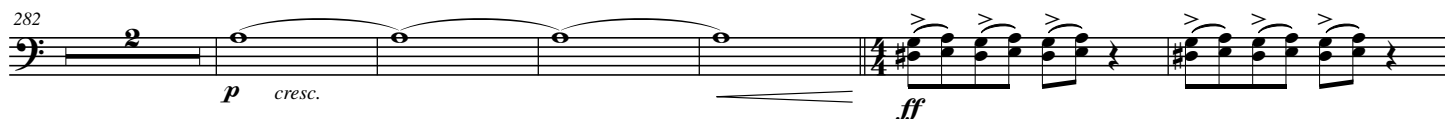
258 21 *poco a poco accel.*

*poco a poco accel.*

4.

- B $\flat$  Euphonium -Vivace ( $\text{♩} = 100$ )

22 Allegretto con brio ( $\text{♩} = 100$ )



23 Tempo Primo ( $\text{♩} = 80$ )



24 Allegretto giocoso ( $\text{♩} = 104$ )



25 marcato poco a poco accel.



26 Allegro ( $\text{♩} = 132$ )



348 *poco riten.* [27] **Allegretto con brio** (♩ = 100)

358 *ff*

362 *p*

366 *simile*

370 *cresc.* [28] *sfz* *f* *ff*

374 *f* *ff* *f* *ff*

378 *f* *ff*

383 [29] **Espressivo** (♩ = 96) *mp*

388 *mp*

394 *mf*

6.

- B $\flat$  Euphonium -

401 30 Vivace (♩ = 100)

*f* *cresc.* *ff*

*stringendo* (♩ = 138)

406

31 Allegro vivace (♩ = 148)

412

32 Con tutta forza e stringendo

420

Presto (♩ = 160)

428

436 (Hand Clap!)

Grandioso (♩ = 40)

*ff* *mf* *fff*