

CAPRICCIO ITALIEN

B \flat Bass

Peter Illitch TCHAIKOVSKY, Op.45

Arranged by José SCHYNS

Andante un poco rubato = 132

Andante un poco rubato $\text{♩} = 132$

12 one 1

1 *ff* *p* 3 3 3 3

Musical notation for the bass line of 'The Rose Tree'. The notation is on a single staff with a bass clef. It consists of 19 measures. The first measure is a whole note G2. The second measure is a quarter note G2. The third measure is a quarter note G2. The fourth measure is a quarter note G2. The fifth measure is a quarter note G2. The sixth measure is a quarter note G2. The seventh measure is a quarter note G2. The eighth measure is a quarter note G2. The ninth measure is a quarter note G2. The tenth measure is a quarter note G2. The eleventh measure is a quarter note G2. The twelfth measure is a quarter note G2. The thirteenth measure is a quarter note G2. The fourteenth measure is a quarter note G2. The fifteenth measure is a quarter note G2. The sixteenth measure is a quarter note G2. The seventeenth measure is a quarter note G2. The eighteenth measure is a quarter note G2. The nineteenth measure is a quarter note G2. The notation includes various musical symbols such as stems, beams, and note heads.

[illegible]

Allargando

32 *p* 3 3 *mf* *mp* 3 3 *p*

38 *pp* 3 3 3 3 *ppp* 3 3 3 8

Stringendo 4 10 riten. 2 5 Tempo I° 6



52

all

6



7 Pochissimo più mosso ♩ = 144



8



9



10



11



12

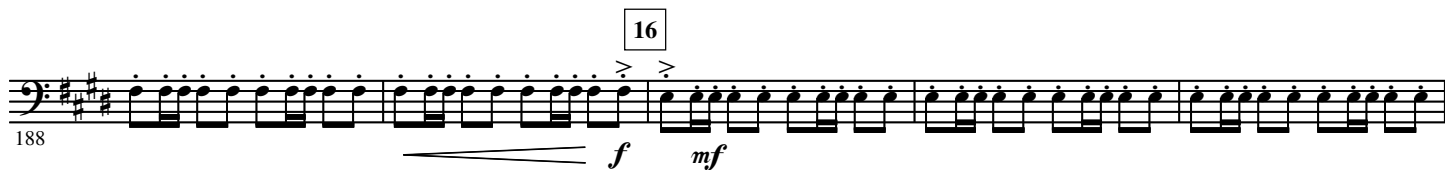


13





15 Allegro moderato ♩ = 120



20



21



Part II
Andante ♩ = 132
one

22



23



Stringendo

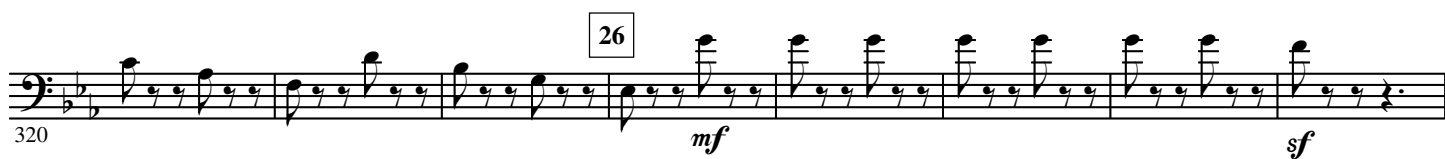
24

Presto ♩ = 192



25





32



33



34



riten.

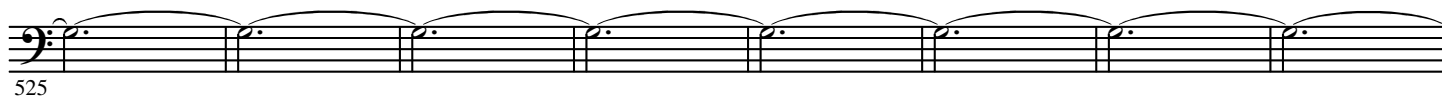
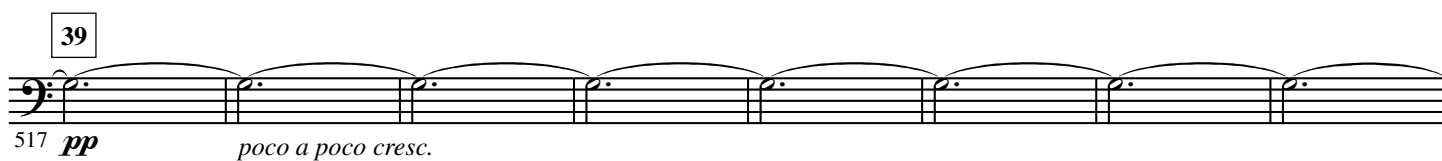
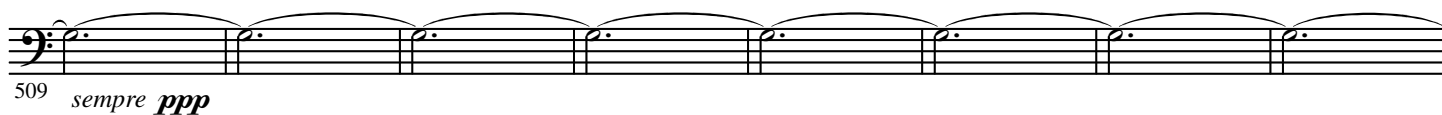
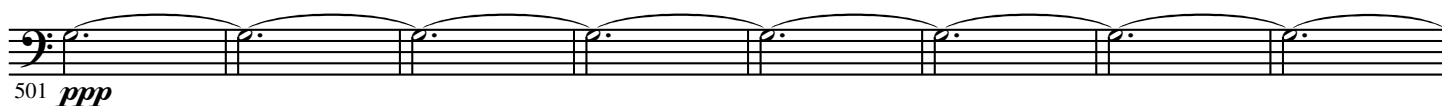
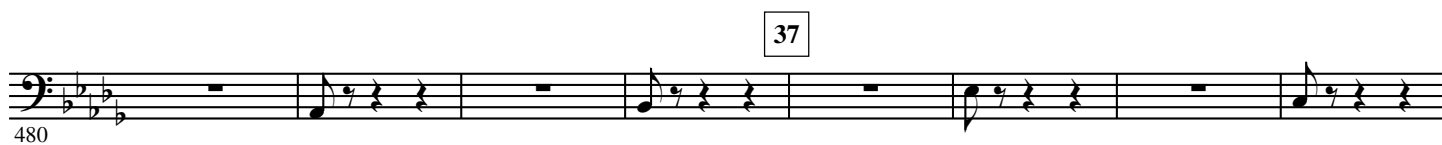
35

Allegro moderato ♩ = 144



36





41 Più presto

549

42

557



565

43

573



581



589

44 Prestissimo

597



605



614



626