

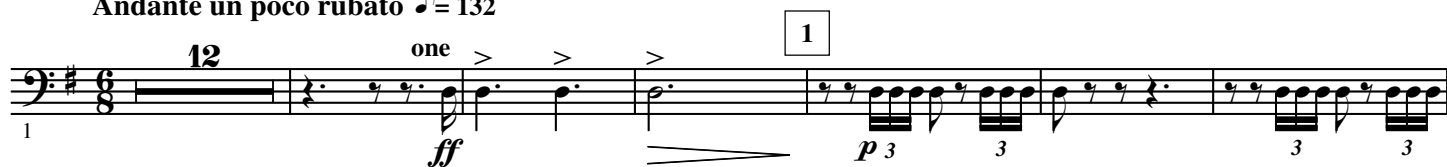
CAPRICCIO ITALIEN

E♭ Bass

Peter Illitch TCHAIKOVSKY, Op.45

Arranged by José SCHYNS

Andante un poco rubato ♩ = 132



all

72 *mf* 3 3 *p* 3 3 *pp* 3 3

78 3 3 3 3

84 3 3 3 3 3 3 *ppp*

7 Pochissimo più mosso $\text{♩} = 144$

91 *pp* *sempre pp*

8

99 *p*

9

107 *pp* *pp* 3

117

10

125 *p*

11

133 *mf cresc.* *f* 2 *mp*

12

142 *p* *p cresc.* *f*

13

150 *ff*

157

162

166 

[illegible]

15 Allegro moderato ♩ = 120

178

183

188

16

f *mf*

The musical score for the bass line of 'The Rose Tree' is shown. It begins at measure 188 with a key signature of three sharps (F#, C#, G#) and a common time signature. The notation consists of eighth and sixteenth notes, with some measures containing beamed sixteenth notes. A crescendo hairpin is placed below the staff, starting under measure 190 and ending under measure 192, with the dynamic markings *f* (forte) and *mf* (mezzo-forte) indicated. A box containing the number '16' is positioned above the staff at the beginning of measure 192.

[illegible]

17

198

p poco a poco cresc. *f*

206 *p* poco a poco cresc. *f*

214

18

mf

2

mf

2

19

mf

The musical score for the bass line of 'The Rose Tree' is shown. It begins at measure 214. The key signature has three sharps (F#, C#, G#). The tempo is marked 'Allegretto' and the dynamics are 'moderato'. The score consists of two measures, 18 and 19. Measure 18 contains a half note G2, a quarter note A2, a quarter note B2, and a half note C3. Measure 19 contains a half note D3, a quarter note E3, a quarter note F#3, and a half note G3. The dynamics are marked 'mf' (mezzo-forte) at the beginning of each measure. The score is written on a single staff with a bass clef.

224

mf *cresc.* *ff*

3 3 3 3

224

mf *cresc.* *ff*

3 3 3 3

20

233

p

21

239

f *p* *p* *pp*

Part II

Andante $\text{♩} = 132$

22

one 3 3

246

pp

5

257

p

3 3 3 3

263

pp 3 3

23

269

pp *p* *mf*

3 3 3 3 3 3

all

275

mp 3 3 *p* 3 3 *pp* 3 3

Stringendo

10

24

all Presto $\text{♩} = 192$

281

p

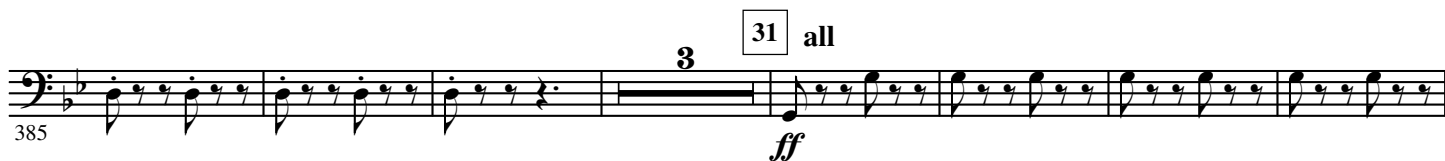
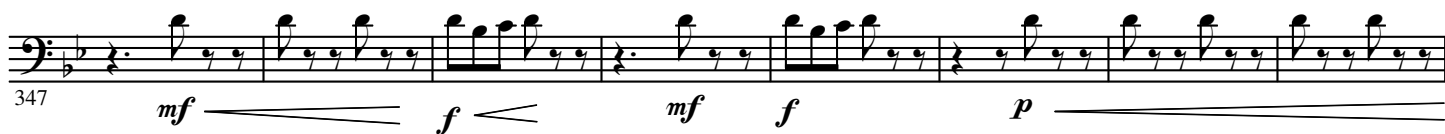
296

mf *p*

25

304

cresc.



32



33



34



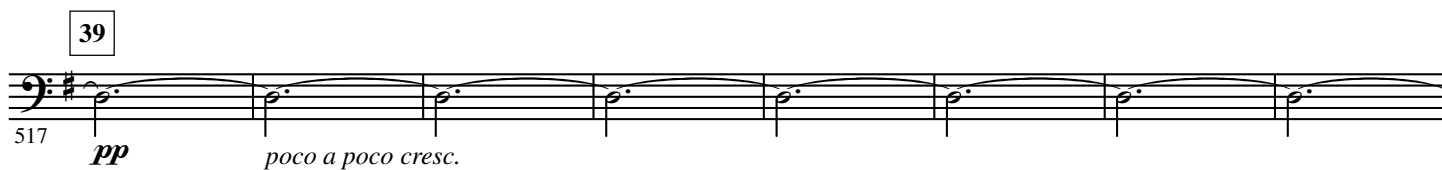
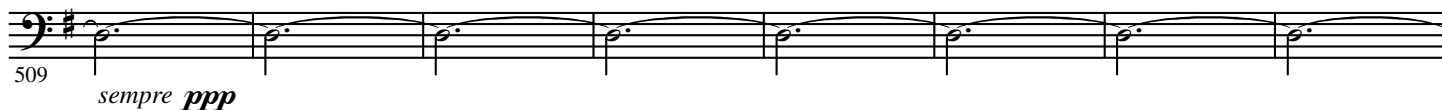
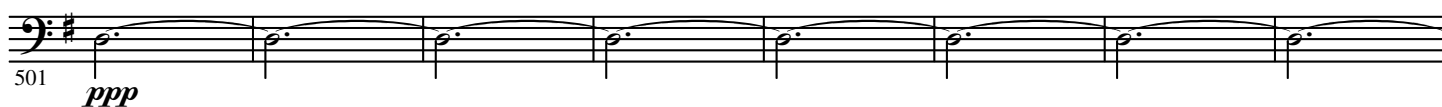
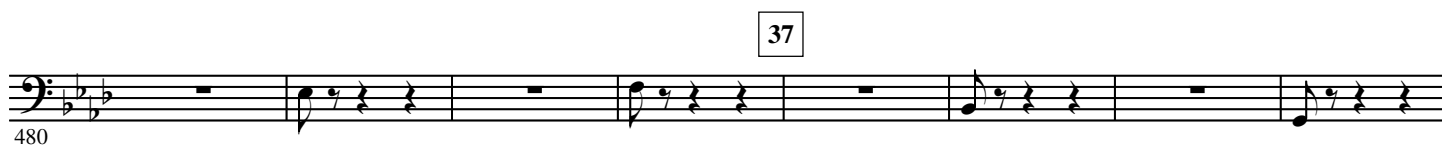
riten.

35

Allegro moderato $\text{♩} = 144$ 

36





41 Più presto



42



43



44 Prestissimo

