

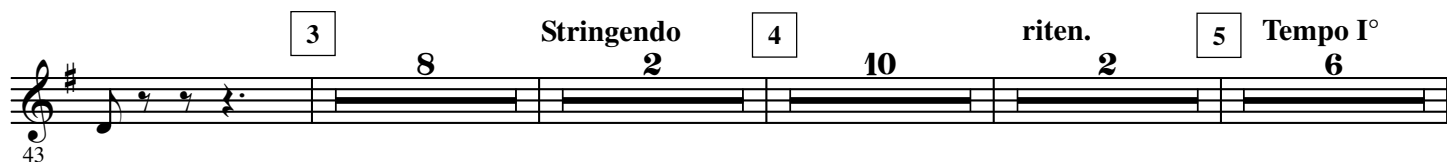
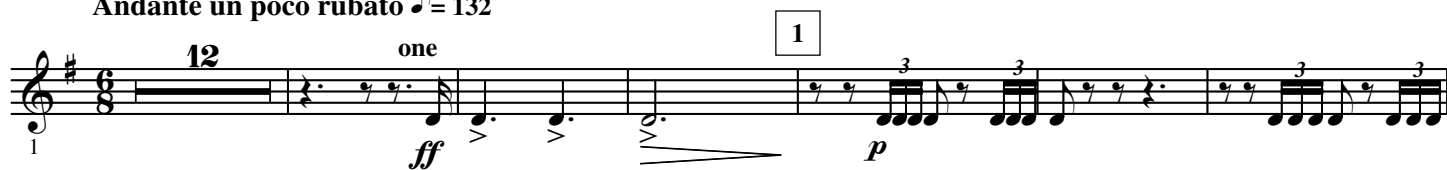
# CAPRICCIO ITALIEN

E♭ Bass

Peter Illitch TCHAIKOVSKY, Op.45

Arranged by José SCHYNS

Andante un poco rubato ♩ = 132



all 6

72 *mf* *p* *pp*

78

84 *ppp*

7 Pochissimo più mosso ♩ = 144

91 *pp* *sempre pp*

8

99 *p*

9

107 *pp* *pp*

117

10

125 *p*

11

133 *mf cresc.* *f* *mp*

12

142 *p* *cresc.* *f*

13

150 *ff*

157

162

Staff 162-165: Treble clef, key of E major. Measures 162-165 contain sixteenth-note patterns with slurs and ties.

166

14

*mf*

Staff 166-170: Treble clef, key of E major. Measures 166-170 contain sixteenth-note patterns with slurs and ties. Measure 170 ends with a half note and a dynamic marking of *mf*.

171

*f* *ff* *ff*

Staff 171-176: Treble clef, key of E major. Measures 171-176 contain eighth-note patterns with slurs and ties. Measure 171 starts with a dynamic marking of *f*, and measures 172-173 have *ff* markings.

178

15 Allegro moderato ♩ = 120

*mf*

Staff 178-182: Treble clef, key of E major. Measures 178-182 contain eighth-note patterns with slurs and ties. Measure 178 starts with a dynamic marking of *mf*.

183

Staff 183-187: Treble clef, key of E major. Measures 183-187 contain eighth-note patterns with slurs and ties.

188

16

*f* *mf*

Staff 188-192: Treble clef, key of E major. Measures 188-192 contain eighth-note patterns with slurs and ties. Measure 188 starts with a dynamic marking of *f*, and measure 189 has a *mf* marking.

193

*p*

Staff 193-197: Treble clef, key of E major. Measures 193-197 contain eighth-note patterns with slurs and ties. Measure 193 starts with a dynamic marking of *p*.

198

17

*p* poco a poco cresc. *f*

Staff 198-205: Treble clef, key of E major. Measures 198-205 contain eighth-note patterns with slurs and ties. Measure 198 starts with a dynamic marking of *p*, and measure 205 has a *f* marking.

206

*p* poco a poco cresc. *f*

Staff 206-213: Treble clef, key of E major. Measures 206-213 contain eighth-note patterns with slurs and ties. Measure 206 starts with a dynamic marking of *p*, and measure 213 has a *f* marking.

214

18

*mf*

2

19

*mf*

Staff 214-223: Treble clef, key of E major. Measures 214-223 contain eighth-note patterns with slurs and ties. Measure 214 starts with a dynamic marking of *mf*, and measure 223 has a *mf* marking.

224

*mf* cresc. *ff*

Staff 224-228: Treble clef, key of E major. Measures 224-228 contain eighth-note patterns with slurs and ties. Measure 224 starts with a dynamic marking of *mf*, and measure 228 has a *ff* marking.

20

233

*p*

21

239

*f* *p* *p* *pp*

22

Andante  $\text{♩} = 132$  Part II one

246

5

*pp*

257

*p*

263

*pp*

23

269

*pp* *p* *mf*

all

275

*mp* *p* *pp*

Stringendo 10

24

Presto  $\text{♩} = 192$  all

281

*p*

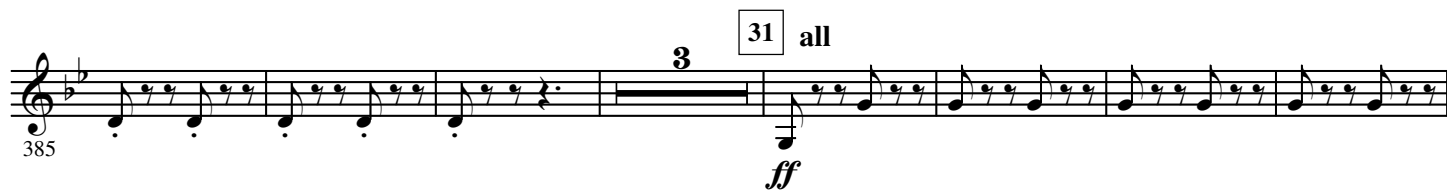
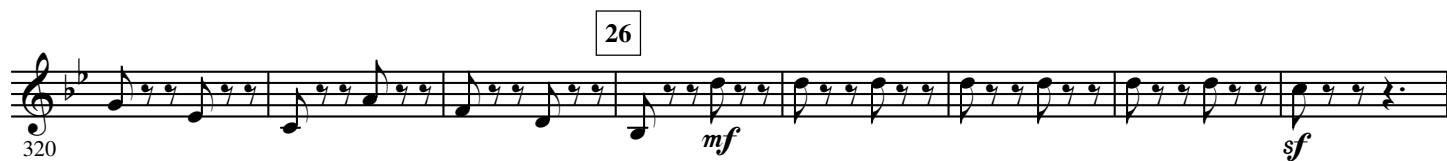
296

*mf* *p*

25

304

*cresc.*



407 *fff*

414



414

421

The first staff of music, measures 421-426. It begins with a treble clef and a key signature of two flats (B-flat and E-flat). The melody consists of eighth and quarter notes, with some measures containing rests. The staff is numbered 421 at the beginning.

428

435

442

riten.

452

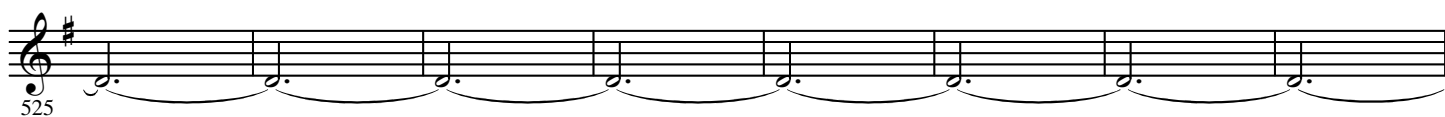
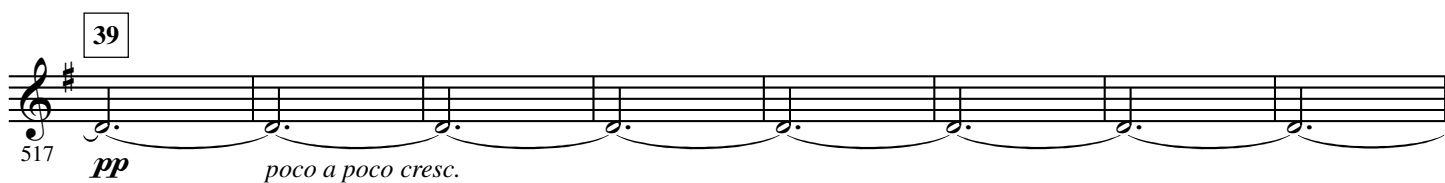
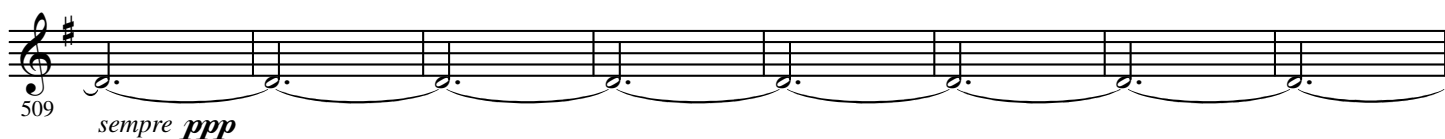
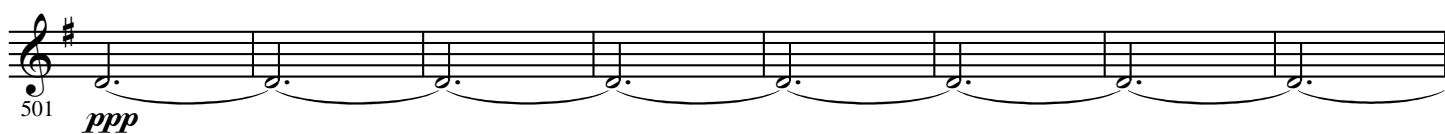
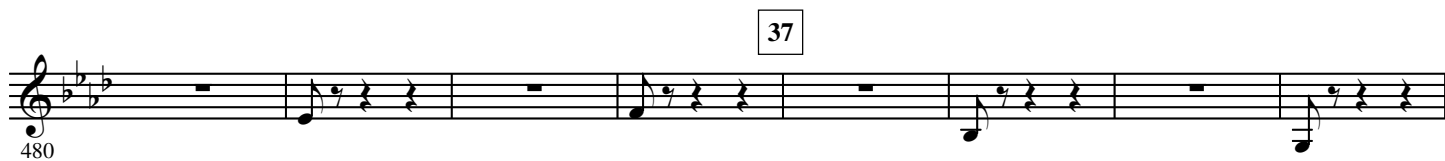
*fff*

458



465

The musical score for 'The Rose Tree' is written on a single staff in treble clef. The key signature has two flats (B-flat and E-flat), and the time signature is 3/4. The melody consists of eighth and quarter notes, with rests. The lyrics 'The Rose Tree' are written below the staff, aligned with the notes. The number '465' is written below the first measure.



## 41 Più presto



## 42



## 43



## 44 Prestissimo

