

# Russian Sailors' Dance

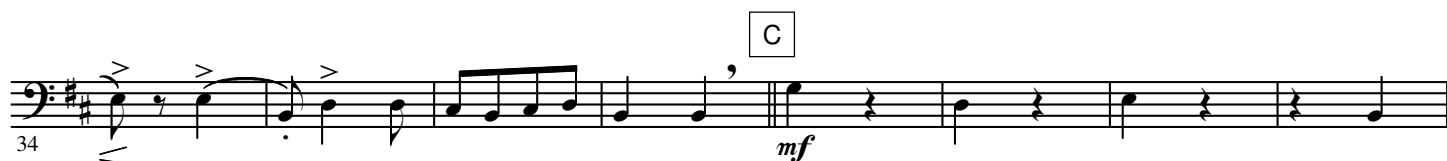
B $\flat$  Bass

from "The Red Poppy"

Reinhold GLIERE

Arr. José SCHYNS

Allegro  $\text{♩} = \pm 88$



I Allegro vivo  $\text{♩} = \pm 140$



J Presto  $\text{♩} = \pm 88$



K Istesso tempo



L



M Più mosso  $\text{♩} = \pm 92$



N Prestissimo  $\text{♩} = \pm 96$



O Più mosso  $\text{♩} = \pm 100$

