

Waltz from

Eugene ONEGIN

(Excerpts)

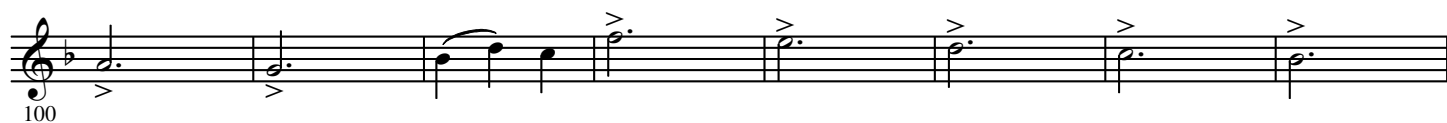
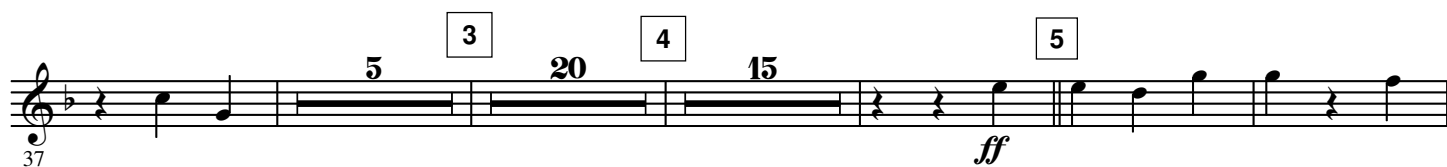
Peter Illitch TCHAIKOVSKY

Arr. Yo KITANO

B \flat Trombone 1

Allegro (Tempo di Valse) $\text{♩} = \pm 80$

cue Hrn. 2



8

127 *mf*

135 *p*

9

143 *mf*

10

151 *ff*

11 12 13 15 16 20

159 *ff*

3 4 14

215 *f*

228

15 cue Hrn. 1

236 *p*

244

16 Play

252 *poco cresc.*

260 *mf*

