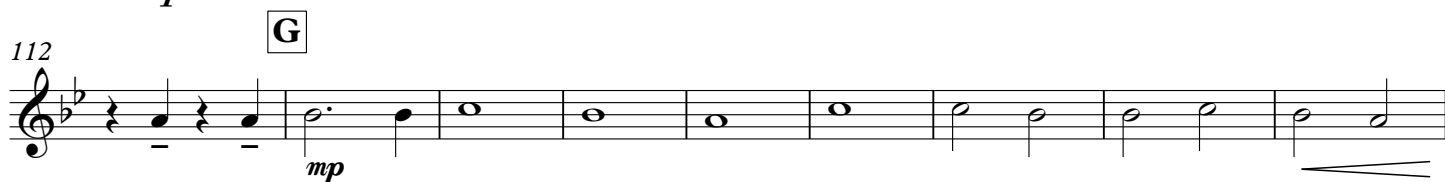
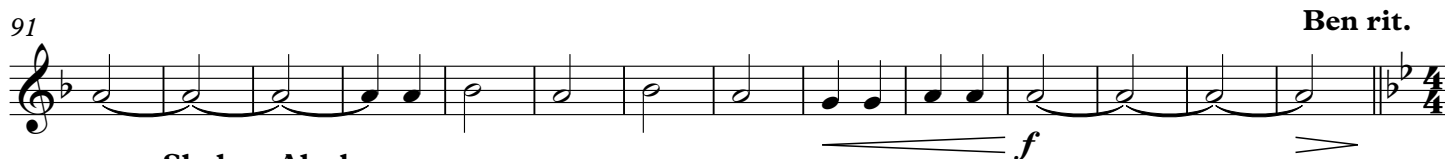
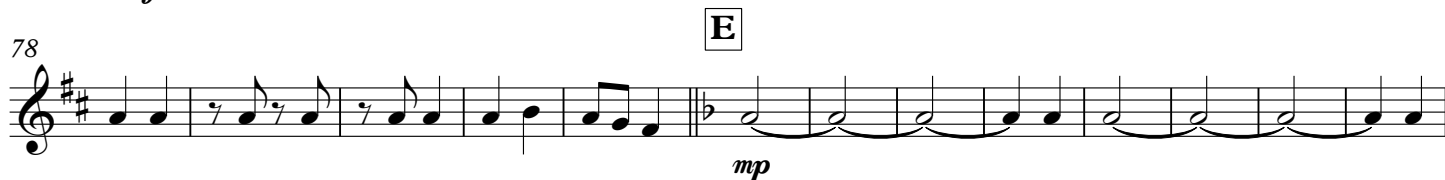
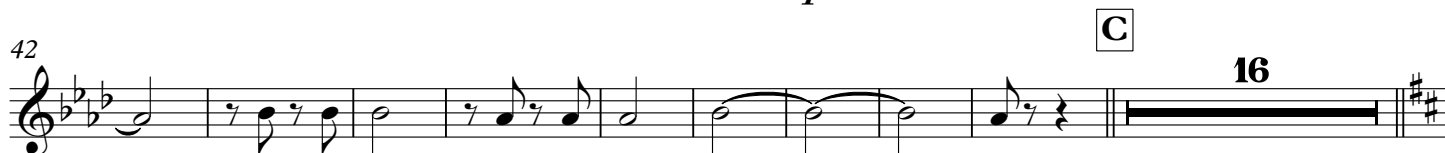
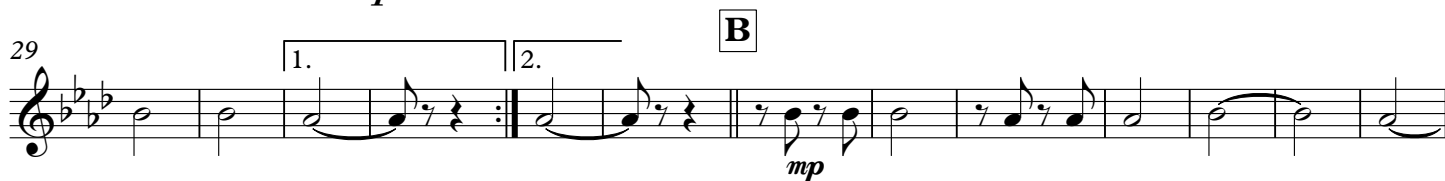


Klezmer Clarinet

Trombone in B \flat 3

Traditional
arr. André WAIGNEIN

$\text{♩} = 144$



Trombone in B \flat 3

131 **I** Cadenza **J** The Klezmer's Freilach Cue T. S. $\text{♩} = 144$ *mf*

142 **K** *mf*

157 **L** Play *p*

171

182 **M** **N** 16 *mp*

210

225 **O** Cadenza **P** $\text{♩} = 160$ *mf* *mf* *mf*

235 **Q** *mf*

249

260 *f*