

As performed by The Boston Pops

When the Saints go Marchin' in

Wind Band

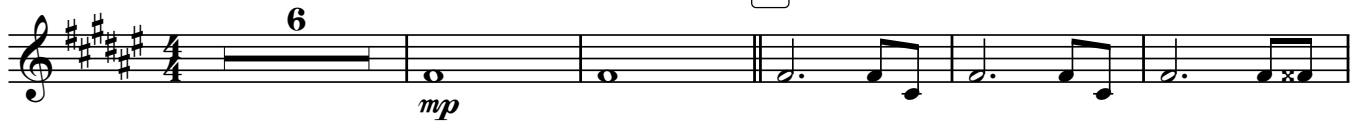
Traditional

arr. Roland SMEETS

E♭ Bass

Moderately March Tempo ♩ = 112

A



B



12



19

C



25

D



30



36

E



42

F



48

G

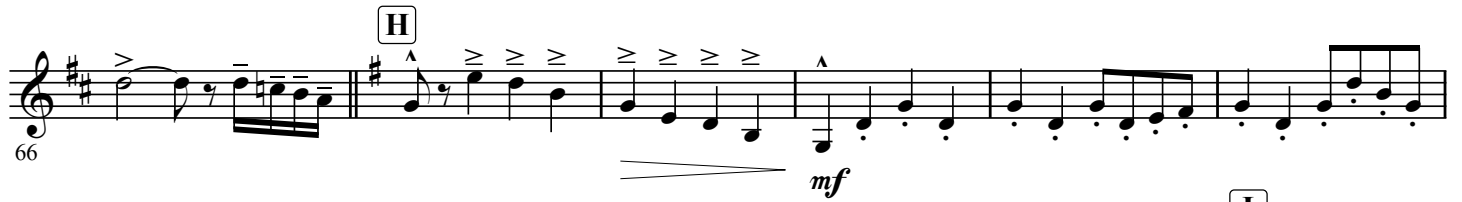


54



60

66 H



mf

Detailed description: Musical staff 66-71. Starts with a treble clef and a key signature of one sharp (F#). Measure 66 has a half note G4 with an accent (>) and a fermata. Measure 67 has a quarter rest followed by eighth notes G4, A4, B4, C5. Measure 68 has a quarter note G4 with an accent (>) and a fermata, followed by a quarter rest. Measure 69 has a quarter note G4 with an accent (>) and a fermata, followed by a quarter rest. Measure 70 has a quarter note G4 with an accent (>) and a fermata, followed by a quarter rest. Measure 71 has a quarter note G4 with an accent (>) and a fermata, followed by a quarter rest. A crescendo hairpin is placed below measures 68-71.

72 I



mp

Detailed description: Musical staff 72-77. Continues with eighth notes G4, A4, B4, C5. Measure 76 has a quarter note G4 with an accent (>) and a fermata, followed by a quarter rest. Measure 77 has a quarter note G4 with an accent (>) and a fermata, followed by a quarter rest.

78



Detailed description: Musical staff 78-83. Continues with eighth notes G4, A4, B4, C5. Measure 82 has a quarter note G4 with an accent (>) and a fermata, followed by a quarter rest. Measure 83 has a quarter note G4 with an accent (>) and a fermata, followed by a quarter rest. A decrescendo hairpin is placed below measures 82-83.

84 J



f

Detailed description: Musical staff 84-89. Measure 84 has a whole rest. Measure 85 has a key signature change to two sharps (F#, C#). The staff continues with eighth notes G4, A4, B4, C5. Measure 88 has a quarter note G4 with an accent (>) and a fermata, followed by a quarter rest. Measure 89 has a quarter note G4 with an accent (>) and a fermata, followed by a quarter rest.

90 K



f

Detailed description: Musical staff 90-94. Measure 90 has a key signature change to one flat (Bb). The staff continues with eighth notes G4, A4, B4, C5. Measure 93 has a quarter note G4 with an accent (>) and a fermata, followed by a quarter rest. Measure 94 has a quarter note G4 with an accent (>) and a fermata, followed by a quarter rest.

95



Detailed description: Musical staff 95-99. Continues with eighth notes G4, A4, B4, C5. Measure 98 has a quarter note G4 with an accent (>) and a fermata, followed by a quarter rest. Measure 99 has a quarter note G4 with an accent (>) and a fermata, followed by a quarter rest.

100 L



f

Detailed description: Musical staff 100-104. Measure 100 has a key signature change to two sharps (F#, C#). The staff continues with eighth notes G4, A4, B4, C5. Measure 103 has a quarter note G4 with an accent (>) and a fermata, followed by a quarter rest. Measure 104 has a quarter note G4 with an accent (>) and a fermata, followed by a quarter rest.

105 M



f

Detailed description: Musical staff 105-109. Measure 105 has a key signature change to one flat (Bb). The staff continues with eighth notes G4, A4, B4, C5. Measure 108 has a quarter note G4 with an accent (>) and a fermata, followed by a quarter rest. Measure 109 has a quarter note G4 with an accent (>) and a fermata, followed by a quarter rest.

110



Detailed description: Musical staff 110-115. Continues with eighth notes G4, A4, B4, C5. Measure 114 has a quarter note G4 with an accent (>) and a fermata, followed by a quarter rest. Measure 115 has a quarter note G4 with an accent (>) and a fermata, followed by a quarter rest.

116



Detailed description: Musical staff 116-120. Measure 116 has a quarter note G4 with an accent (>) and a fermata, followed by a quarter rest. Measure 117 has a quarter note G4 with an accent (>) and a fermata, followed by a quarter rest. Measure 118 has a quarter note G4 with an accent (>) and a fermata, followed by a quarter rest. Measure 119 has a quarter note G4 with an accent (>) and a fermata, followed by a quarter rest. Measure 120 has a quarter note G4 with an accent (>) and a fermata, followed by a quarter rest.

121 N



Detailed description: Musical staff 121-125. Measure 121 has a quarter note G4 with an accent (>) and a fermata, followed by a quarter rest. Measure 122 has a quarter note G4 with an accent (>) and a fermata, followed by a quarter rest. Measure 123 has a quarter note G4 with an accent (>) and a fermata, followed by a quarter rest. Measure 124 has a quarter note G4 with an accent (>) and a fermata, followed by a quarter rest. Measure 125 has a quarter note G4 with an accent (>) and a fermata, followed by a quarter rest.