

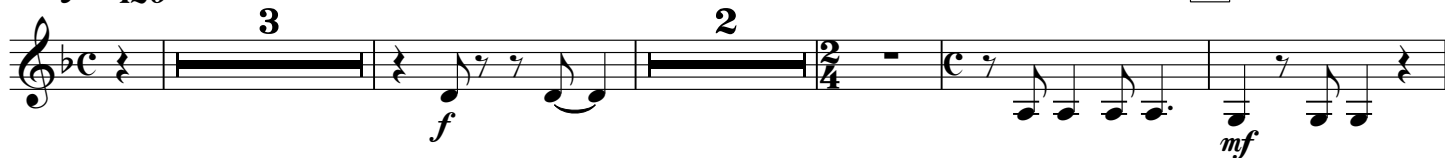
Michel FUGAIN version latine

Tuba in Eb

Michel FUGAIN
arr. Maxime LEGAULOIS

♩ = 120 Les Sud-Américaines

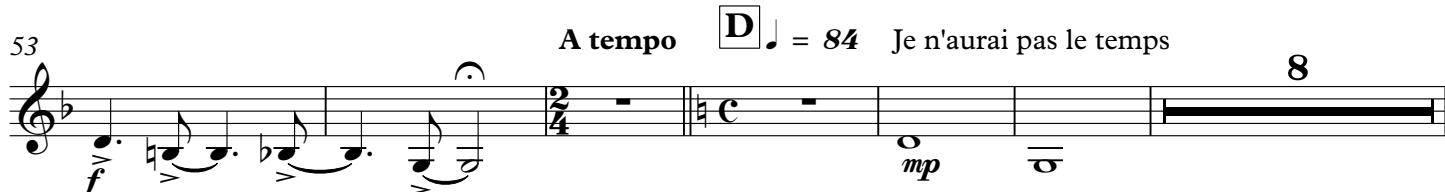
A



B



C



67 **E**

mf

75 **F**

81 **G**

mf
rit.

88

95 **H** ♩ = 110 Le printemps
Ossia

mf

102 **I**

mf

109 **J**

f

116 **K** Ossia

mf

122 **L**

129 **M**

mf

136

f

N ♩ = 100 Version latine
4

143

Staff 143-151: Treble clef, key of D major (two sharps). The staff contains a series of eighth and sixteenth notes with various rests. A box labeled 'O' is placed below the staff at measure 148. The piece ends with a forte (f) dynamic marking.

152

Staff 152-156: Treble clef, key of D major. The staff contains a series of eighth and sixteenth notes with various rests. A mezzo-forte (mf) dynamic marking is present at measure 153.

157

Staff 157-161: Treble clef, key of D major. The staff contains a series of eighth and sixteenth notes with various rests. A mezzo-forte (mf) dynamic marking is present at measure 160. A box labeled 'P' is placed below the staff at measure 160.

162

Staff 162-166: Treble clef, key of D major. The staff contains a series of eighth and sixteenth notes with various rests. A mezzo-forte (mf) dynamic marking is present at measure 165. A key signature change to E major (three sharps) occurs at measure 166.

167

Staff 167-171: Treble clef, key of E major (three sharps). The staff contains a series of eighth and sixteenth notes with various rests. A box labeled 'Q' is placed below the staff at measure 170.

172

Staff 172-176: Treble clef, key of E major. The staff contains a series of eighth and sixteenth notes with various rests. A mezzo-forte (mf) dynamic marking is present at measure 173.

177

Staff 177-181: Treble clef, key of E major. The staff contains a series of eighth and sixteenth notes with various rests. A box labeled 'R' is placed below the staff at measure 180.

182

Staff 182-187: Treble clef, key of E major. The staff contains a series of eighth and sixteenth notes with various rests. A mezzo-forte (mf) dynamic marking is present at measure 185. A box labeled '2' is placed above the staff at measure 183.

188

Staff 188-192: Treble clef, key of E major. The staff contains a series of eighth and sixteenth notes with various rests. A box labeled 'S' is placed below the staff at measure 191.

193

Staff 193-197: Treble clef, key of E major. The staff contains a series of eighth and sixteenth notes with various rests. A mezzo-forte (mf) dynamic marking is present at measure 193.

198

Staff 198-200: Treble clef, key of E major. The staff contains a series of eighth and sixteenth notes with various rests. A forte (f) dynamic marking is present at measure 199.

201

Staff 201-205: Treble clef, key of E major. The staff contains a series of eighth and sixteenth notes with various rests. A forte (f) dynamic marking is present at measure 204.