

SYLVIA

Suite from the Ballet

Léo DELIBES

Arranged by José SCHYNS

Prélude

I. Prélude - Les Chasseresses

Moderato maestoso $\text{♩} = 63$

1 *ff*

8

A Poco animando Meno mosso

15 *p*

2

B Andante $\text{♩} = 66$ Tempo I°

22 *p*

p

C Allegro $\text{♩} = 152$

30 *f*

6 *p*

allargando

42 *mf*

f

D Les chasseresses Allegretto animato $\text{♩} = 88$

49 *f*

mf

mf

E

61 *f*

70

F

79 *f*

ff

G **Meno mosso**

one player



Two players



H

2



sempre two players

All



I

Tempo I $^{\circ}$ animato

5

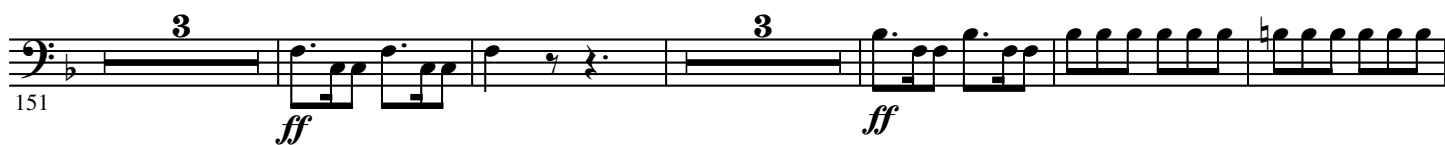


K



3

3



L

Più animato $\text{♩} = 100$ 

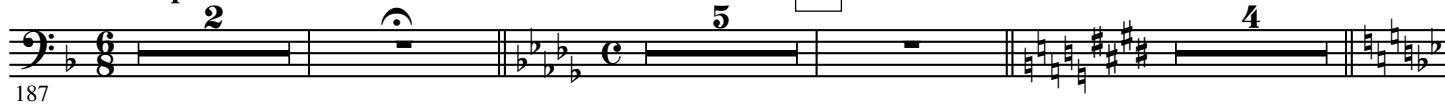
Intermezzo

A tempo

II. Intermezzo et valse lente

Moderato

A



B

Two players

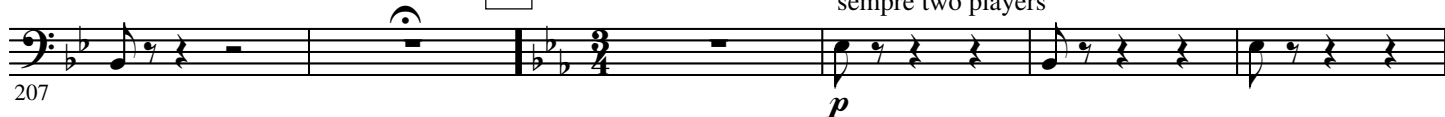


Valse lente

Sostenuto ♩ = 126

sempre two players

C



D



E

Poco animando



F

Tempo I°



G



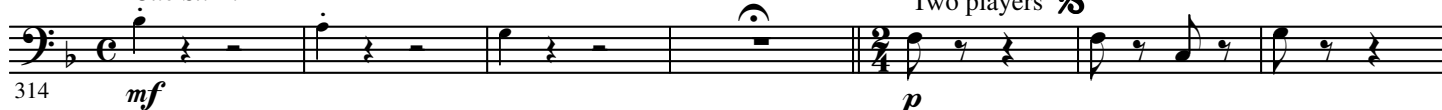
4.

- B \flat Bass -poco rall. H a tempo

III. Pizzicati

Moderato $\text{♩} = 88$

Cue St. B.

AAllegro ben moderato $\text{♩} = 69$ Two players ⌘  ⌘ CODAD Più animato

animato



Allegro ♩ = 152

IV. Cortège de Bacchus

372 *All* *ff* *sec.*

A Moderato ben marcato ♩ = 104

377 *ff* *f* *one*

387 *All* *ff* *Stagger breathing* *mf*

394

402 **B**

410

418 **C**

425

430 **D** *f* *ff*

437

444

E



F



G



H



I



J



557

K

p 3

ff

4

567

one

f

All

ff

574

> > >

> > >

581

L Più animato $\text{♩} = 132$

p

6

8

587

594

M

601

cres - cen - do

608

e ac - ce - le - ran - do poco à poco

615

N

f

7

allargando

