

SYLVIA

Suite from the Ballet

Léo DELIBES

Arranged by José SCHYNS

Prélude

I. Prélude - Les Chasseresses

Moderato maestoso $\text{♩} = 63$

1 *ff*

8

15 **A** Poco animando *p* Meno mosso 2

22 **B** Andante $\text{♩} = 66$ 2 *p* Tempo I° *p*

30 **C** Allegro $\text{♩} = 152$ 6 *f* *p*

42 *mf* *f* allargando

49 **D** Les chasseresses Allegretto animato $\text{♩} = 88$ 4 *f* *mf* 3 *mf*

61 **E** 2 *f*

70 2 *f* 2

79 **F** 2 *f* 4 *ff* 3

93 *ff* *f* *p* **G** **Meno mosso** one player

100 *p* Two players

108 **H** 2

117 *p* **All** sempre two players

124 *f* **I** **Tempo I $^\circ$ animato** *f*

131 5

143 *f* **K** *cresc.* *ff*

151 3 *ff* 3 *ff*

162 **L** **Più animato** $\text{♩} = 100$ *f*

170

178 *ff*

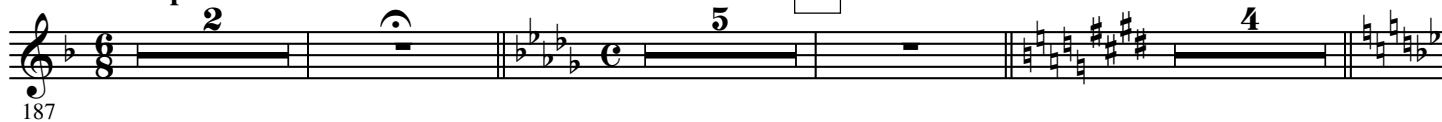
Intermezzo

II. Intermezzo et valse lente

A tempo

Moderato

A



B

Two players

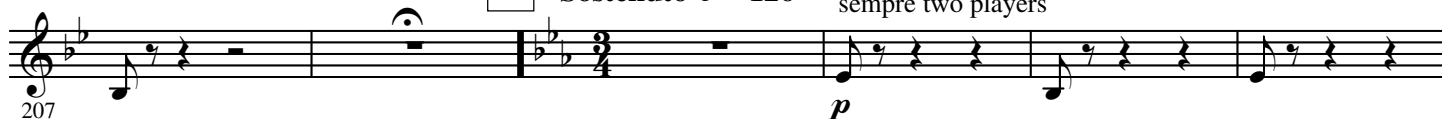


Valse lente

C

Sostenuto ♩ = 126

sempre two players



D



E

Poco animando



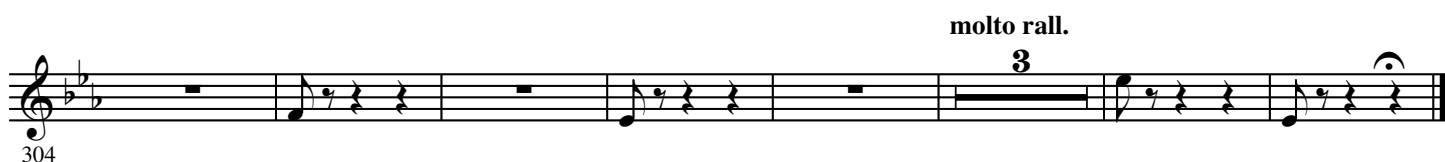
F

Tempo I°



G





III. Pizzicati

Moderato $\text{♩} = 88$

Cue St. B.

A Allegro ben moderato $\text{♩} = 69$

Two players X



Φ CODA

D Più animato

animato



Allegro ♩ = 152

IV. Cortège de Bacchus

372 *All* *ff* *sec.*

A **Moderato ben marcato** ♩ = 104

377 *ff* *f* *one*

387 *All* *ff* *Stagger breathing* *mf*

394

402 **B**

410

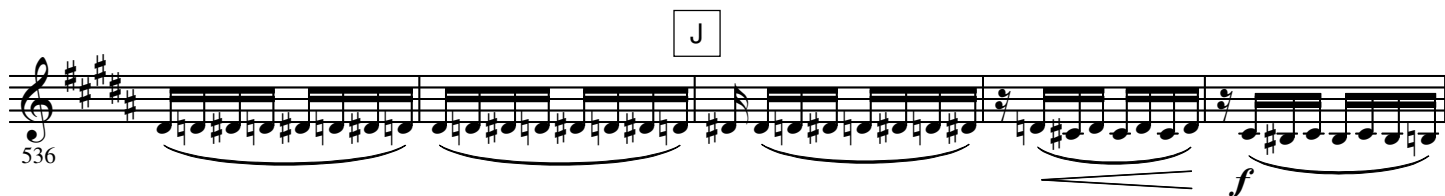
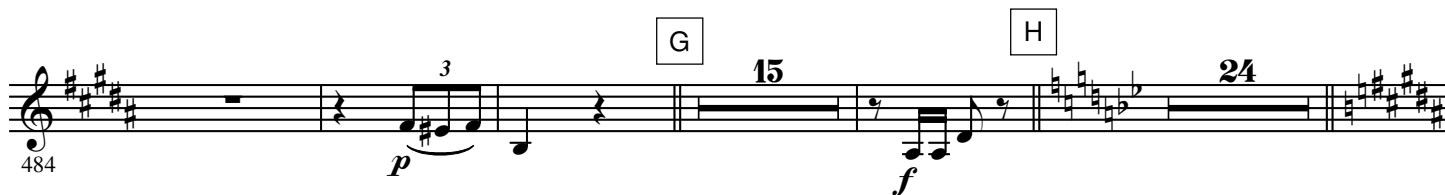
418 **C**

425

430 *f* *ff* **D**

437

444



557

K

3

p

4

ff

567

one

f

All

ff

574

581

L Più animato ♩ = 132

p

587

594

M

601

cres - cen - do

608

e ac - ce - le - ran - do poco à poco

615

N

7

f

allargando

629 *f*

O Largo $\text{♩} = 66$

637 *ff*

div. 1. 2. *ff*

All div.

642 *ff*

All div.

647 *ff*

All Rall.

P Allegro vivace $\text{♩} = 160$

652 *f*

658 *ff*

Q

671 *ff*

680 *ff*

R

689

696