

B \flat Trombone 2

SYLVIA

Léo DELIBES

Suite from the Ballet

Arranged by José SCHYNS

Prélude

I. Prélude - Les Chasseresses

Moderato maestoso $\text{♩} = 63$

1 *ff*

8

15 **A** Poco animando 3 **B** Andante 3 Tempo I° 6

16

32 **C** Allegro 17 **D** Allegretto animato 14 **E** Allegretto animato 2 *f*

33 Les chasseresses

69 **F** 2 **G** Meno mosso 16 *f*

70

79 **F** 2 **G** Meno mosso 16 *f*

80

93 **F** 2 **G** Meno mosso 16 *f*

94

115 **H** 8 **I** Tempo I° animato 4 *f*

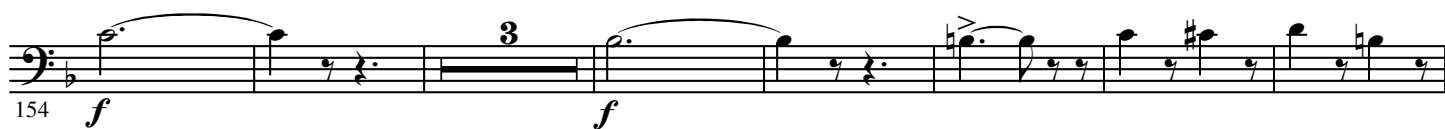
116

129 **J** 4 **K** Meno mosso 16 *f*

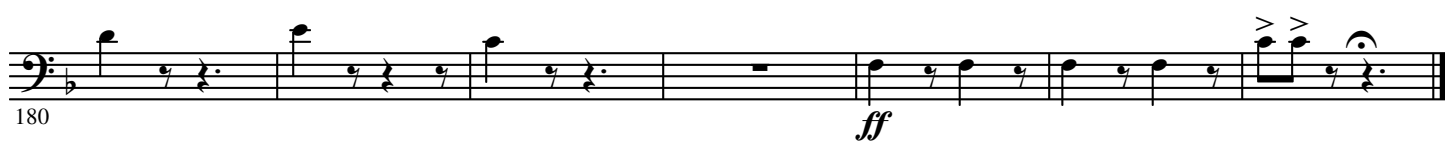
130

136 **K** 16 **L** 4 *ff*

137



L Più animato $\text{♩} = 100$



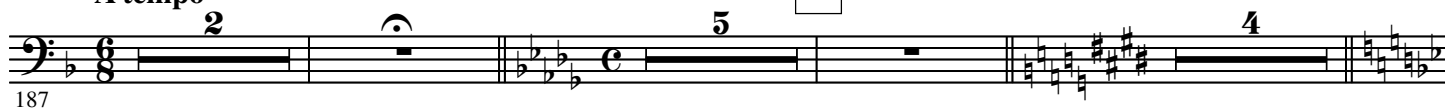
II. Intermezzo et valse lente

Intermezzo

A tempo

Moderato

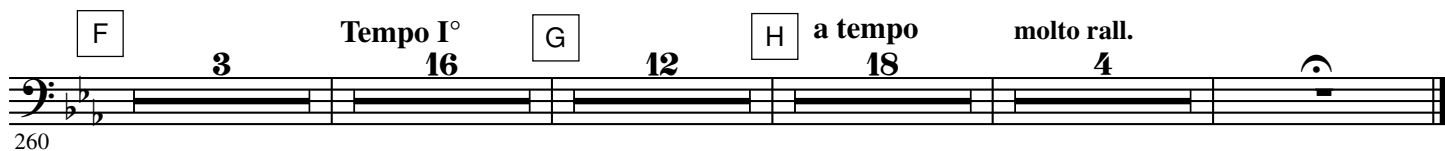
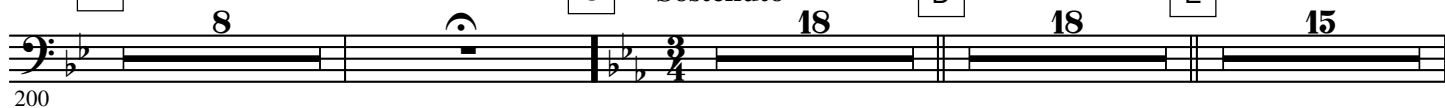
A



Valse lente

Sostenuto

Poco animando

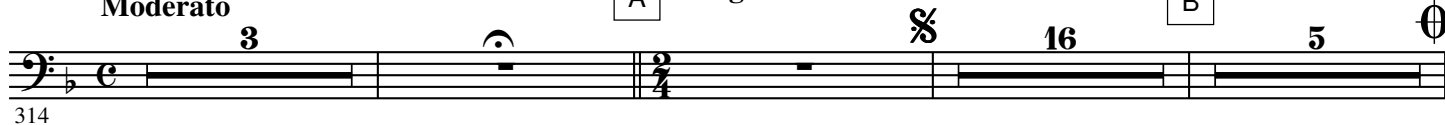


III. Pizzicati

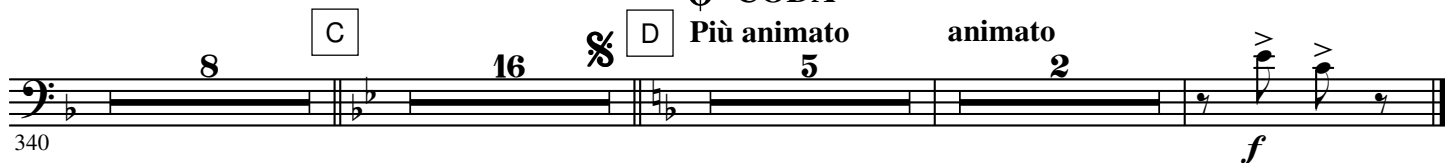
Moderato

A Allegro ben moderato

B



CODA



IV. Cortège de Bacchus

Allegro $\text{♩} = 152$

A Moderato ben marcato



382 *f*

389 *ff* 16 B 15 C

425 *mf* *f*

432 D *ff*

439

446 E *p*

453

460 F 4 *p*

470

477 *f* 3

484 G H 2 15 24 *f*

527 I

f *f*

535 J

p *p*

544

551

f

558 K

ff *f*

569

ff

576

583 L Più animato $\text{♩} = 132$

p *p*

596 M

p *p*

605

cres - cen - do e ac - ce - le - ran - do poco à poco

612 N

619

f *f* *f*

630

allargando

f

637

O Largo $\text{♩} = 66$

ff

644

ff

650

Rall. **P** Allegro vivace $\text{♩} = 160$

f

657

Q

f *ff*

670

ff

679

R

ff

688

ff

695

ff