

B \flat Trombone 3

SYLVIA

Suite from the Ballet

Léo DELIBES

Arranged by José SCHYNS

Prélude**I. Prélude - Les Chasseresses****Moderato maestoso** $\text{♩} = 63$

1 **ff**

8

A Poco animando 3

Meno mosso 3

B Andante 3

Tempo I° 6

15

C Allegro 17

D Allegretto animato 14

E 2

32 Les chasseresses **f**

69

F 2

79 **f**

4

f

3

G Meno mosso 16

93 **f**

f

H 7

115 **p** *cresc.* **f**

I Tempo I° animato **f**

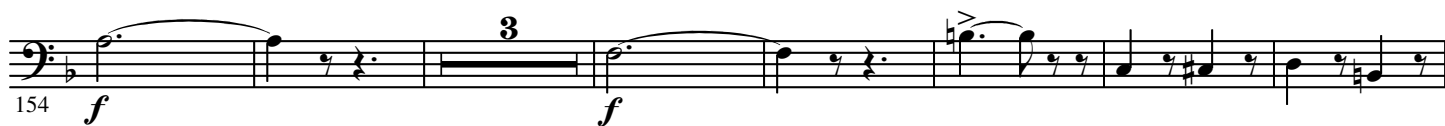
128

K 7

4

3

135 **ff**



L Più animato $\text{♩} = 100$

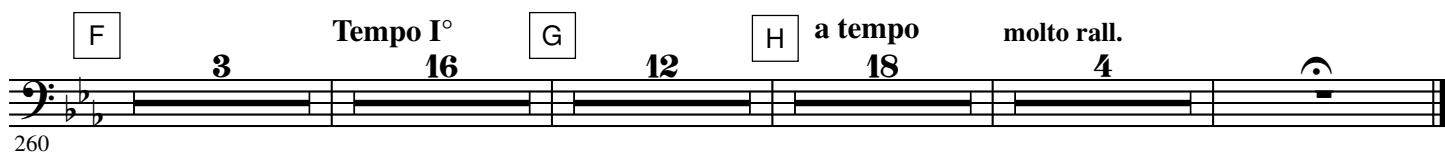
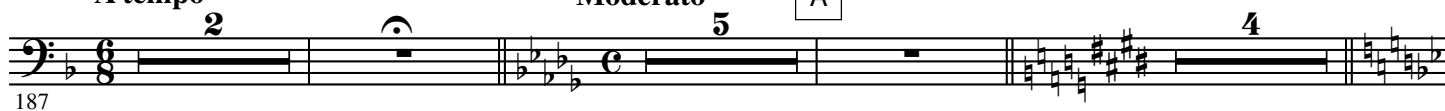


II. Intermezzo et valse lente

Intermezzo

A tempo

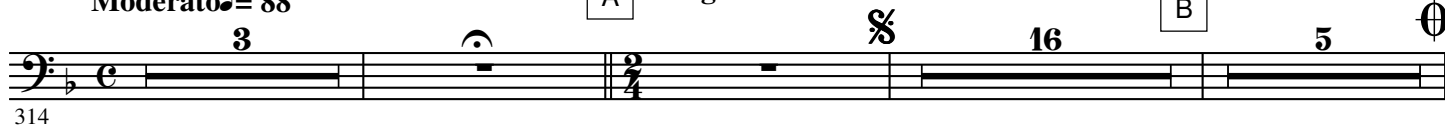
Moderato



III. Pizzicati

Moderato $\text{♩} = 88$

A Allegro ben moderato



⌘ CODA



IV. Cortège de Bacchus

Allegro $\text{♩} = 152$

A Moderato ben marcato



382 *f*

389 *ff* 16 B 15 C 6

430 *f* D *ff*

437

444

E 451 *p*

459 3

F 469 *p*

477 3

G 15 H 24 I 3 *f*

532 *f* *p* **J**

542 *p*

550

557 **K** *ff* *f*

569 *ff*

576

L Più animato ♩ = 132 583 *p* *p*

596 *p* *p* **M**

cres - cen - do e ac - ce - le - ran - do poco à poco 605

612 **N**

619 *f* *f* *f*

630 *allargando*

637 *ff*

644

651 *Rall.* *P* *Allegro vivace* $\text{♩} = 160$ *f*

658 *Q* *ff*

671 *ff*

680 *R* *ff*

689

696