

SYLVIA

Suite from the Ballet

Léo DELIBES

Arranged by José SCHYNS

Prélude

I. Prélude - Les Chasseresses

Moderato maestoso ♩ = 63

1 *ff*

8

A Poco animando Meno mosso

15 *p* 2

B Andante ♩ = 66 Tempo I°

22 *p* *p*

C Allegro ♩ = 152

30 *f* *p* 6

allargando

42 *mf* *f*

D Les chasseresses Allegretto animato ♩ = 88

49 *f* *mf* *mf* 4 3

E

61 *f*

70

F

79 *f* *ff* 2 4 3

G **Meno mosso**

one player



Two players



H

2

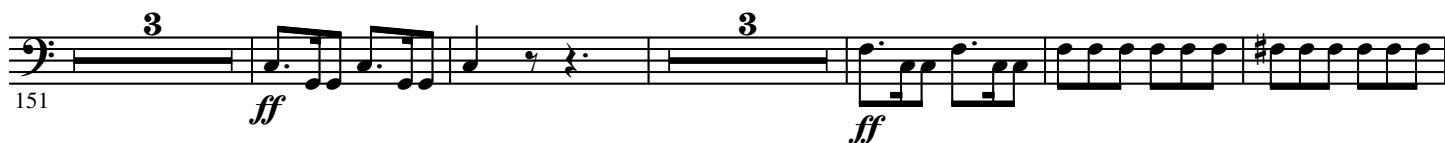


sempre two players

All

I **Tempo I° animato**

K

L **Più animato** ♩ = 100

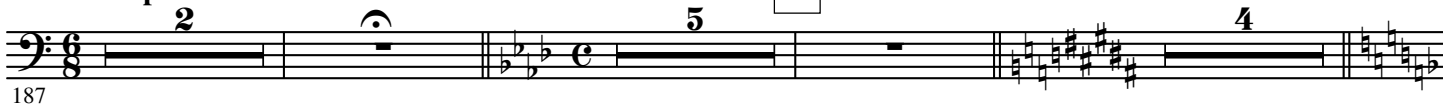
Intermezzo

II. Intermezzo et valse lente

A tempo

Moderato

A



B

Two players

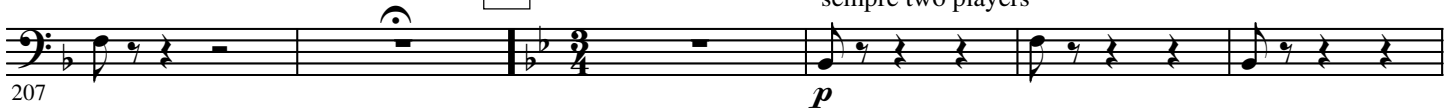


Valse lente

C

Sostenuto ♩ = 126

sempre two players



D



E

Poco animando



F

Tempo I $^{\circ}$



G



4.

- E \flat Bass -poco rall. H a tempo

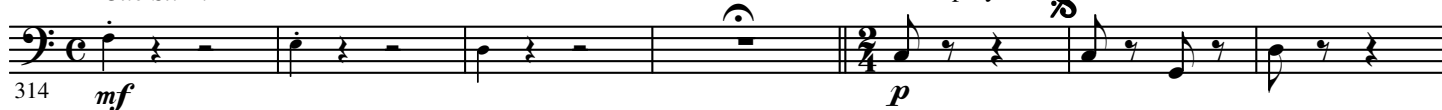
III. Pizzicati

Moderato $\text{♩} = 88$

Cue St. B.

A Allegro ben moderato $\text{♩} = 69$

Two players

 Φ CODAD Più animato

animato



Allegro $\text{♩} = 152$

IV. Cortège de Bacchus

All *sec.*

372 *ff*

A **Moderato ben marcato** $\text{♩} = 104$

377 *ff* *one* *f*

All *Stagger breathing*

387 *ff* *mf*

394

B

402

410

C

418

425

D

430 *f* *ff*

437

444

E

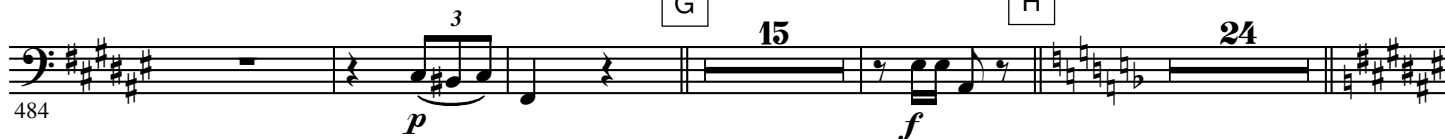


F



G

H



I



J



557

p

K

ff

567

one

f

All

ff

574

581

L Più animato ♩ = 132

p

587

594

M

601

cres - cen - do

608

e ac - ce - le - ran - do poco à poco

615

N

f

7

629 *f* **allargando**

O Largo $\text{♩} = 66$

637 *ff*

642

647 **Rall.**

P Allegro vivace $\text{♩} = 160$

652 *f*

658 **Q** *ff*

671 *ff*

680 **R** *ff*

689

696