

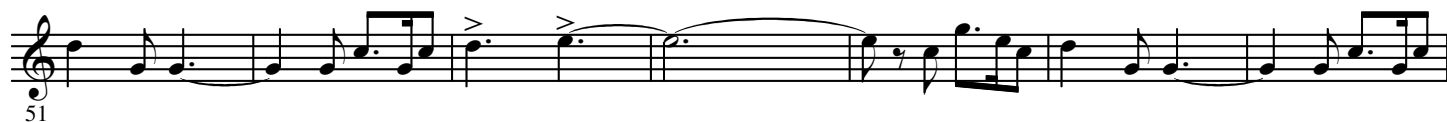
E♭ Horn 1

SYLVIA

Suite from the Ballet

Léo DELIBES

Arranged by José SCHYNS

Prélude**I. Prélude - Les Chasseresses**Moderato maestoso $\text{♩} = 63$ 

74 *Solo* *p* *p* *< >* **F**

80 *f* *f*

86

92

G *Meno mosso* *Soli* *p*

98

H *7* *mf* *p*

106

I *Tempo I° animato* *cresc.* *f* *f*

120

128

136 *cresc.*

K *ff*

144

152



L Più animato ♩ = 100



II. Intermezzo et valse lente

Intermezzo

A tempo

Solo

Moderato ♩ = 69

A

Solo



Valse lente

Sostenuto ♩ = 126



E Poco animando

Solo

F

Tempo I°

Solo



H a tempo

Solo

molto rall.

291

p

pp

12

4

Solo

III. Pizzicati

Moderato ♩ = 88

A Allegro

B

Solo

314

p

3

Solo

A

Allegro

16

B

2

Solo

p

3

4

⊕ CODA
Più animato

339 

animato

366

p *f*

IV. Cortège de Bacchus

Allegro ♩ = 152

A Moderato ben marcato ♩ = 104

372

ff

B

403

f >

4

f >

f >

C

D

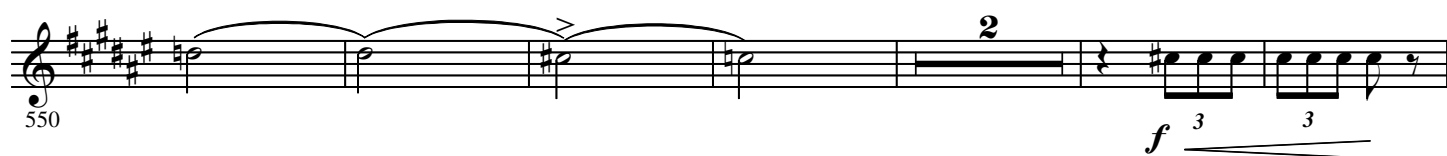
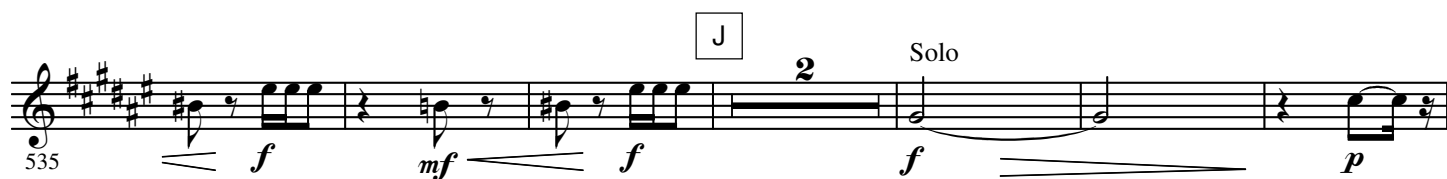
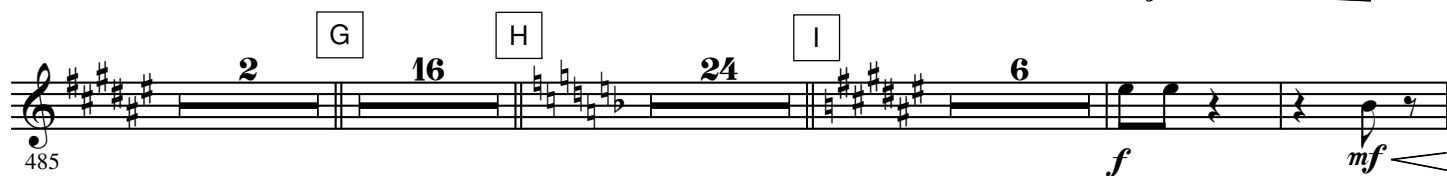
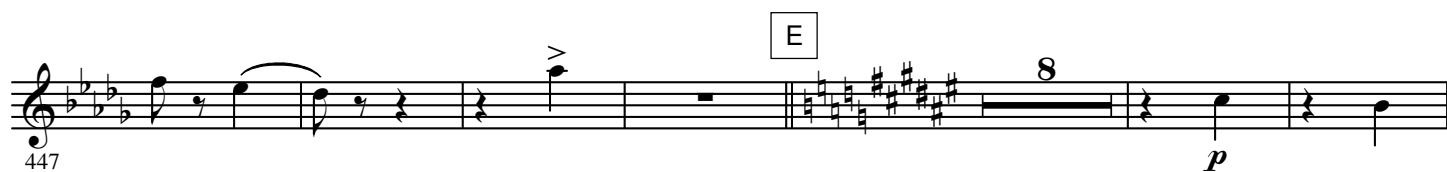
427

p *f* *ff*

434

The musical notation for measures 434-438 is as follows:

- Measure 434: A quarter note G4, a quarter note F4, a quarter note E4, and a quarter note D4.
- Measure 435: A quarter note C4, a quarter note B3, a quarter note A3, and a quarter note G3.
- Measure 436: A quarter note F3, a quarter note E3, a quarter note D3, and a quarter note C3.
- Measure 437: A quarter note B2, a quarter note A2, a quarter note G2, and a quarter note F2.
- Measure 438: A quarter note E2, a quarter note D2, a quarter note C2, and a quarter note B1.



6.

- E \flat Horn 1 -

L Più animato $\text{♩} = 132$



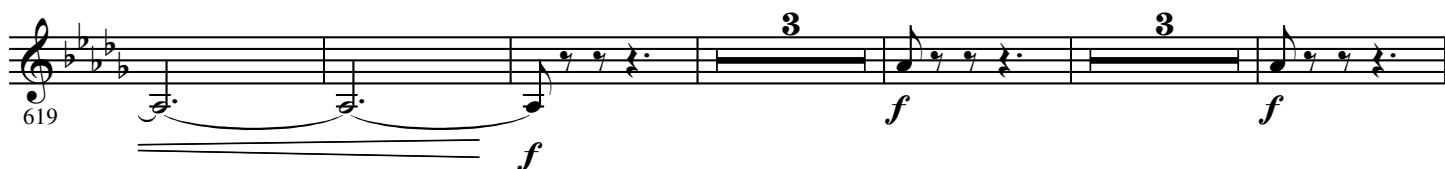
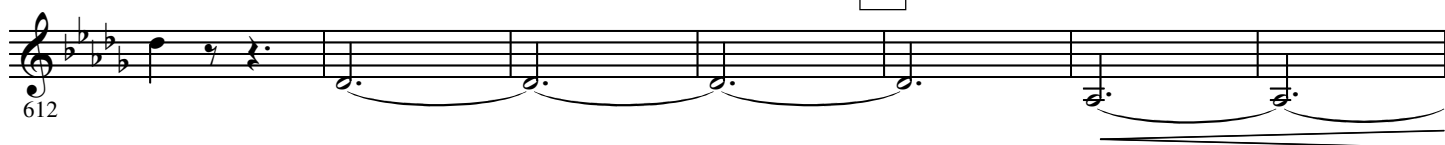
M



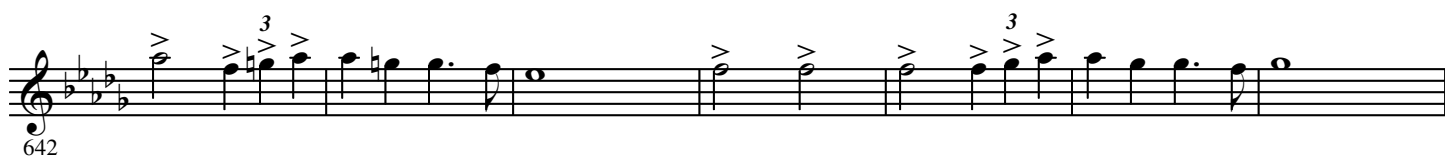
cres - cen - do e ac - ce - le - ran - do poco à poco



N

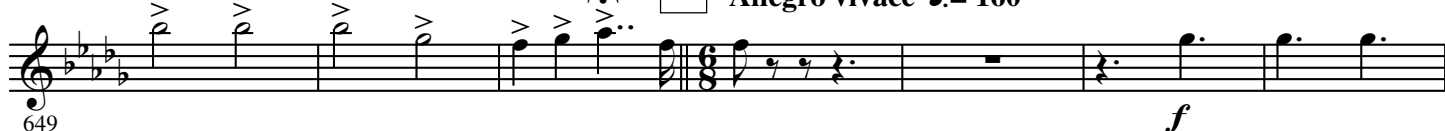


allargando **O** Largo $\text{♩} = 66$



Rall.

P Allegro vivace $\text{♩} = 160$



656 *f* *mf*

663 *ff* Q

673 *ff*

680 *f* *ff* R

687

695