

## Prélude

## I. Prélude - Les Chasseresses

Moderato maestoso ♩ = 63

1 *ff*

8

A Poco animando 2 Meno mosso 3 B Andante 3

15 *p*

Tempo I° C Allegro ♩ = 152

26 *ff*

43 *f* allargando

## Les chasseresses

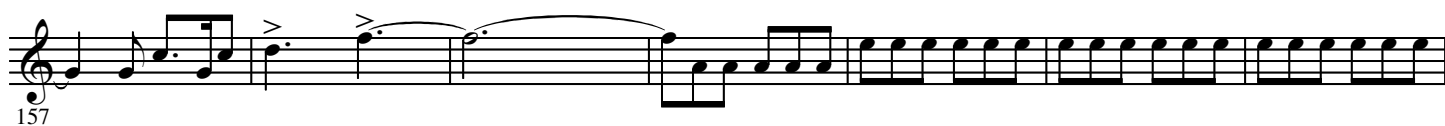
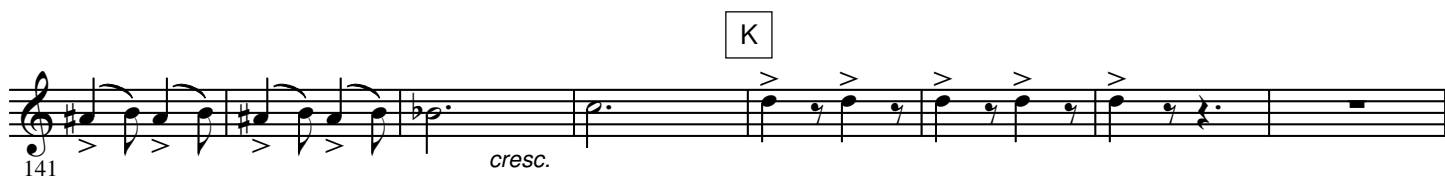
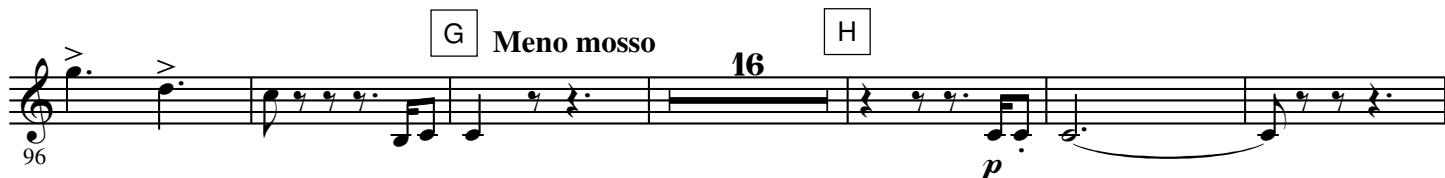
D Allegretto animato ♩ = 88

49 *f* *f* ben marc.

56 E

64 *f*

71 F 2 *f* 2



179 *ff*

## II. Intermezzo et valse lente

**Intermezzo**  
A tempo

Moderato

A

187

B

8

C

Valse lente  
Sostenuto

18

D

18

E

Poco animando

15

200

F

3

Tempo I°

16

G

12

H

a tempo

18

molto rall.

4

260

## III. Pizzicati

Moderato ♩ = 88

A

Allegro ben moderato

B

314

C

15

D

5

CODA

Più animato

animato

348

*p*

*p*

*f*

## IV. Cortège de Bacchus

Allegro ♩ = 152

A

Moderato ben marcato ♩ = 104

372

*ff*

384

*f*

*ff*

390

*f*

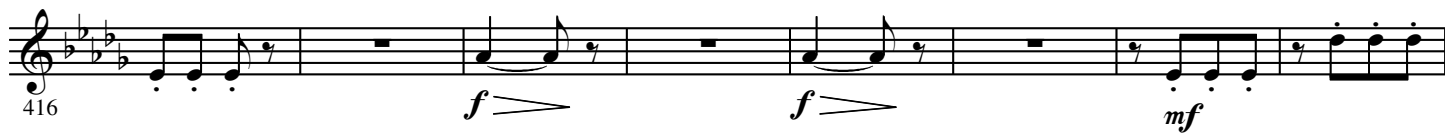
396

*f*

*f*

*f*

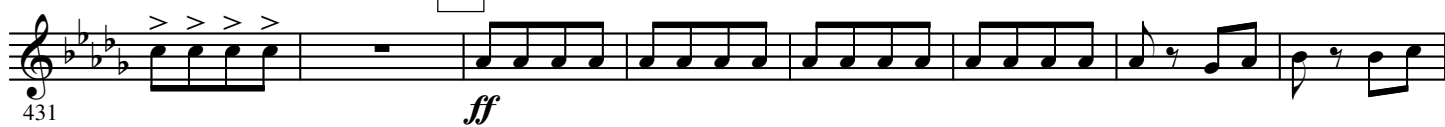
B



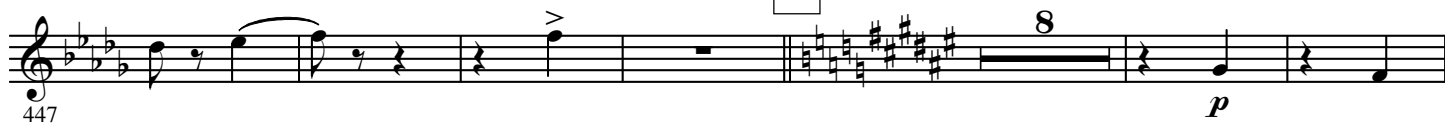
C



D



E



F

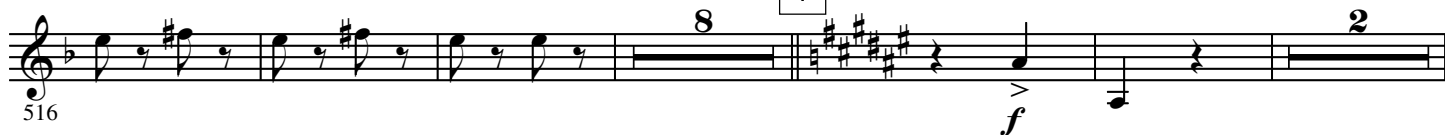


G

H



I



531 J **f** **4**

542 **p** **mf** **p** **mf** **3**

550 **f**

558 K **ff** **f**

570 **ff**

577

L Più animato M **17** **p** **cres - cen - do**

**e ac - ce - le - ran - do** **poco à poco**

N **613**

**allargando** **f** **f** **f** **3** **4**

**O** **Largo** ♩ = 66

637 *ff*

644

**Rall.** **P** **Allegro vivace** ♩. = 160

651 *f*

658 *f* *mf*

**Q**

665 *ff*

**R**

674 *ff* *f*

681 *ff*

688

695