

SYLVIA

Léo DELIBES

Suite from the Ballet

Arranged by José SCHYNS

Prélude

I. Prélude - Les Chasseresses

Moderato maestoso ♩ = 63

1 *ff*

8

15 *p*

2 3 3

18 *f*

Tempo I° 6 6 *ff*

26

43 *f*

46 *f*

49 *f* *ben marc.*

55 *f*

56 *f*

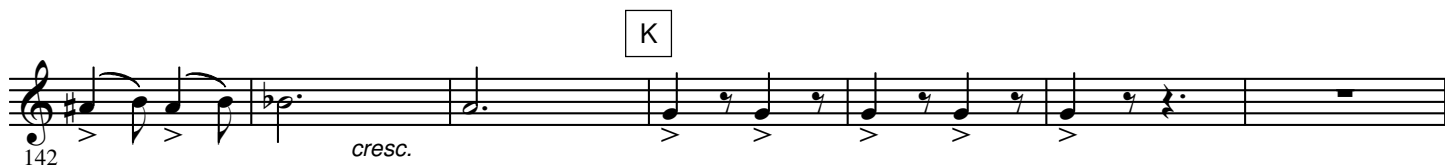
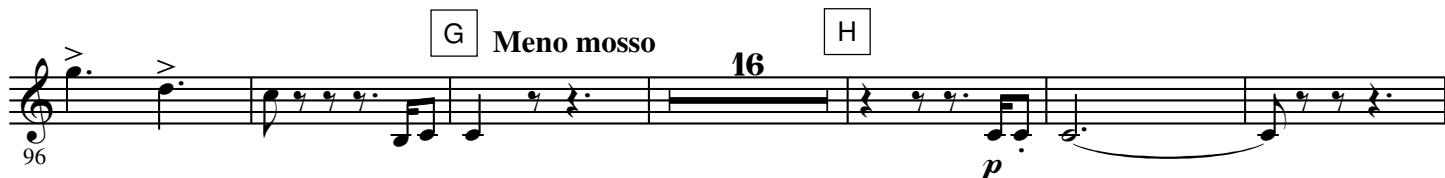
63 *f*

64 *f*

70 *f*

71 *f*

76 *f*



179 *ff*

II. Intermezzo et valse lente

Intermezzo
A tempo

Moderato

A

187

2

5

4

Valse lente
Sostenuto

B

8

C

18

D

18

E

Poco animando

15

200

F

3

Tempo I°

G

16

H

a tempo

18

molto rall.

4

260

III. Pizzicati

Moderato ♩ = 88

A

Allegro ben moderato

B

5

8

C

16

D

8

314

Φ CODA

Πù animato

IV. Cortège de Bacchus

Allegro ♩ = 152

A

Moderato ben marcato ♩ = 104

372

4

4

ff

385

f

ff

392

mf

399

B

406

414 *mf*

422 *mf* **C**

429 *f* *ff* **D**

437

445 *p* **E** 8

460 *f* 3 3 **F** 2 8

477 *p* *f* 3 3

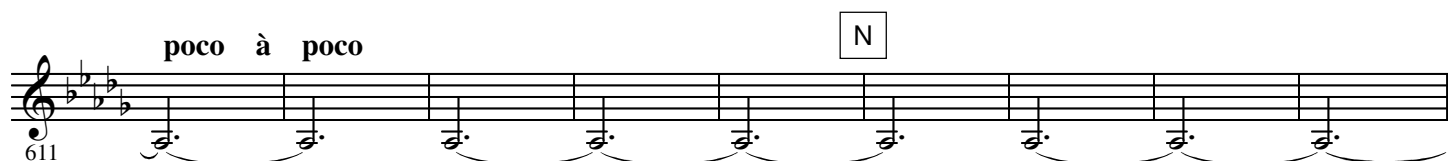
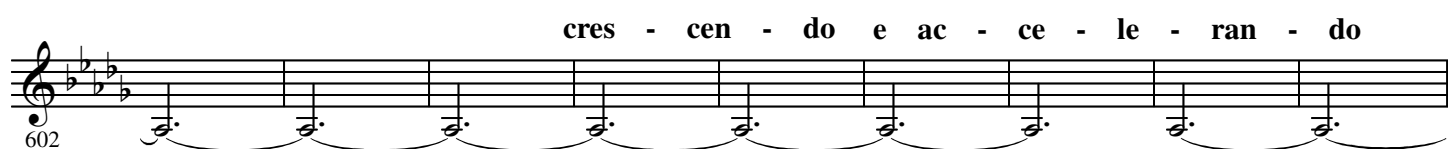
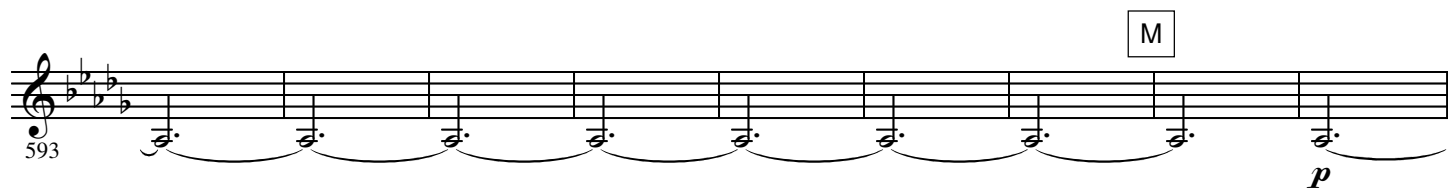
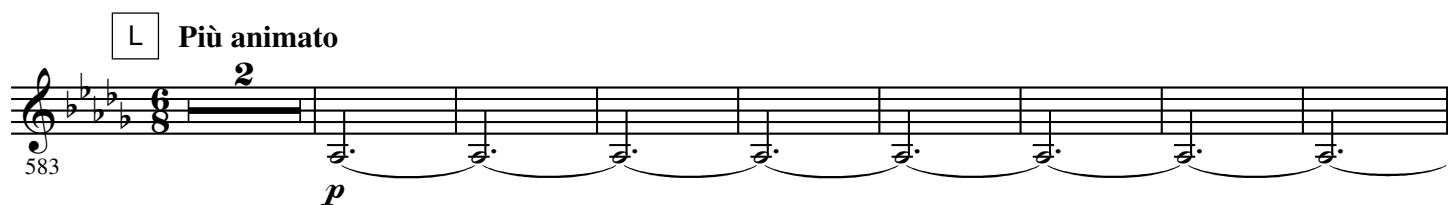
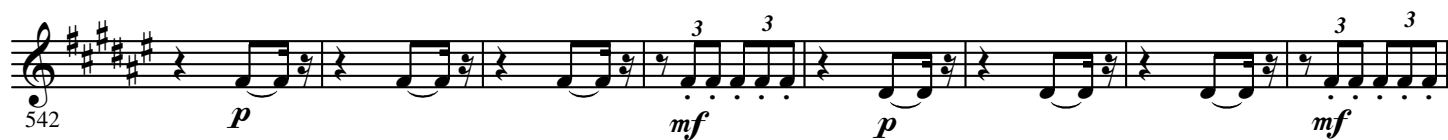
485 *mf* **G** 2 **H** 16

508

516 *f* **I** 8 2

531 *f* **J** 4

Detailed description of the musical score: The score is for the E♭ Horn 4 part. It begins at measure 414 with a mezzo-forte (*mf*) dynamic. The key signature has four flats. Measures 422-429 continue with *mf* and then *f* and *ff* dynamics. A box labeled 'C' is above measure 422. A box labeled 'D' is above measure 429. Measure 437 has a box labeled 'E' above it. Measure 445 has a box labeled 'F' above it and a dynamic of *p*. Measure 460 has a box labeled 'G' above it and a dynamic of *f*. Measure 477 has a box labeled 'H' above it and a dynamic of *p*. Measure 485 has a box labeled 'I' above it and a dynamic of *mf*. Measure 508 has a box labeled 'J' above it. Measure 516 has a box labeled 'K' above it and a dynamic of *f*. Measure 531 has a box labeled 'L' above it and a dynamic of *f*. The score includes various articulations such as accents, slurs, and breath marks. There are also performance markings like '2', '8', '3', '4', and '16' which likely indicate fingerings or breath counts. The key signature changes to three sharps at measure 460.



O **Largo** ♩ = 66

637 *ff*

3

3

644

3

Rall. **P** **Allegro vivace** ♩ = 160

651 *f*

6

658 *f* *mf*

Q

665 *ff*

3

674 *ff* *f* **R**

681 *ff*

2 2

688

695