

*Tribute to the Valley of Aosta*

# **"ITINERANCES TEMPORELLES"**

Symphonic poem

André WAIGNEIN

**B $\flat$  Tuba**

*Tribute to the Valley of Aosta*

**B $\flat$  Tuba**

# "ITINERANCES TEMPORELLES"

André WAIGNEIN

Symphonic poem

$\text{♩} = 66$

*ppp*

13

19

*pppp*

24

crescendo poco a poco

33

42

sempre crescendo

poco accelerando

50

55

$\text{♩} = 72$

*ff*

59

*pp*

75

one

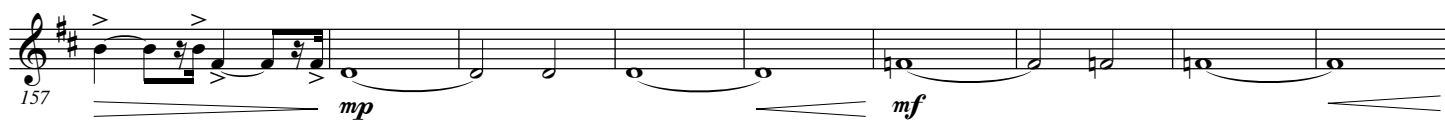
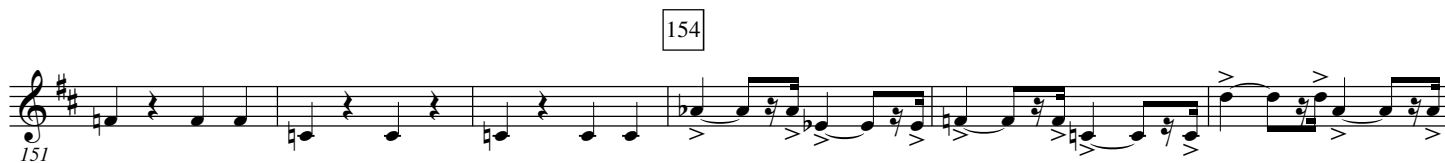
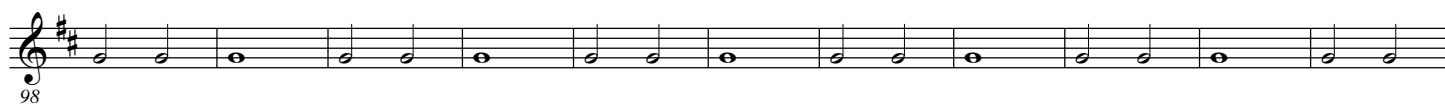
All

75

*pp*

95

87



4.

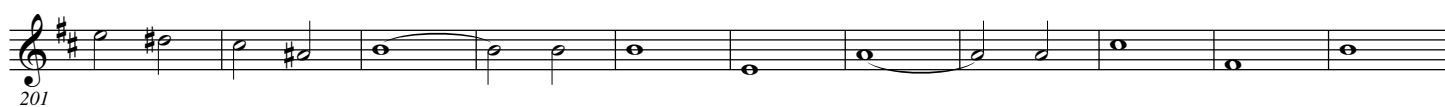
- B $\flat$  Tuba -

Ritenu

186

 $\text{♩} = 66$ 

197 one



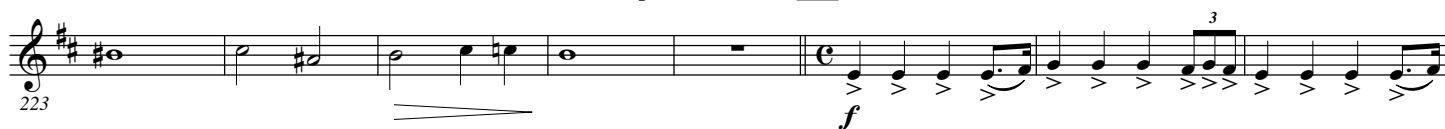
213

All



poco ritenu

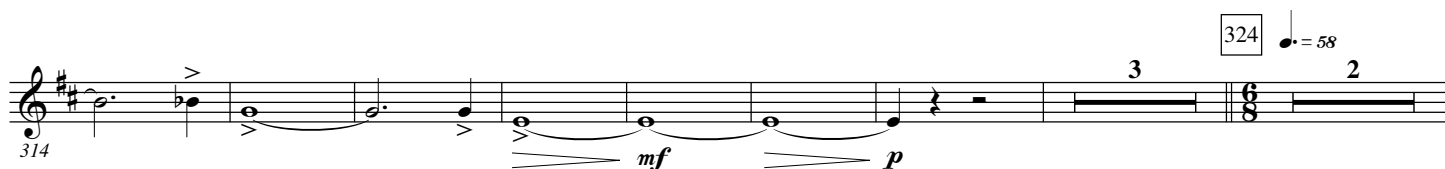
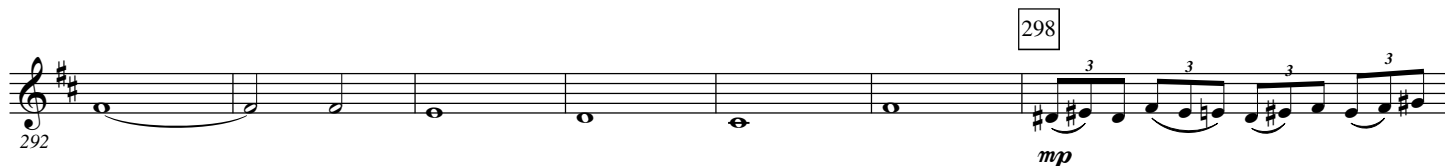
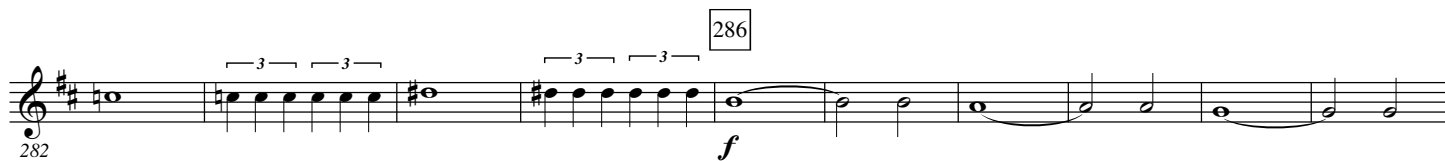
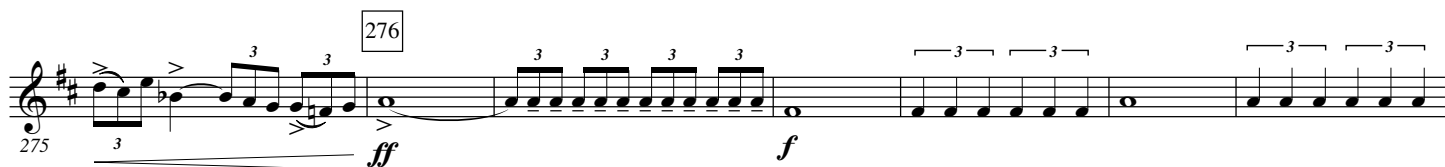
228

 $\text{♩} = 116$ 

250



260



one

326 *p*

342 All

338 *p* *mf* *p*

350 *f* *ff*

360 *f* *ff*

poco ritenuto 376 ♩ = 76

369 *p* *pp*

386 ♩ = 84

380 *p* *ff*

389

poco ritenuto 400 ♩ = 138

397 *mp* *mf*

405 *f* *mf*

416

411 *f* *mf* *f*

418 426

*ff*

427

*fp ff fp f*

436 440

*p mf f*

461 463

*mp* ♩ = 69

469 471

*ff*

477 479

*p f*

485 487

*f p*

494 494

*f* ♩ = 136

500 503

*f*

