

*Tribute to the Valley of Aosta*

# **"ITINERANCES TEMPORELLES"**

Symphonic poem

André WAIGNEIN

**E $\flat$  Horn 4**

**E $\flat$  Horn 4**

# "ITINERANCES

André WAIGNEIN

Symphonic poem

10  $\text{♩} = 66$   
*ppp*

19 12 33 20 2  $\text{♩} = 72$   
*ff*  
*poco accelerando*

58

67 6 75 8  
*pp* *ppp*

87

95  
*ppp*

103

111  
*mf*

118 *poco accelerando*

125  $\text{♩} = 76$   
*ff*

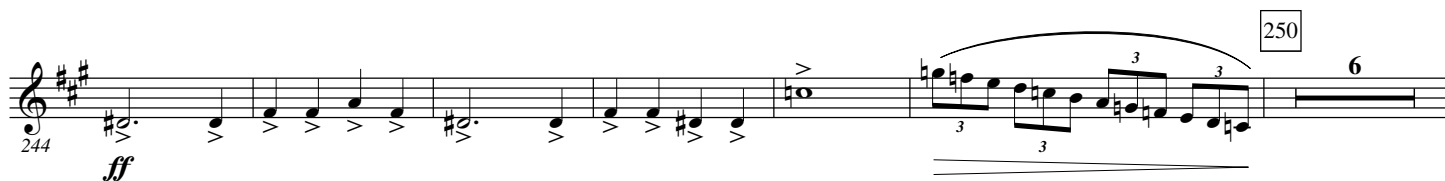
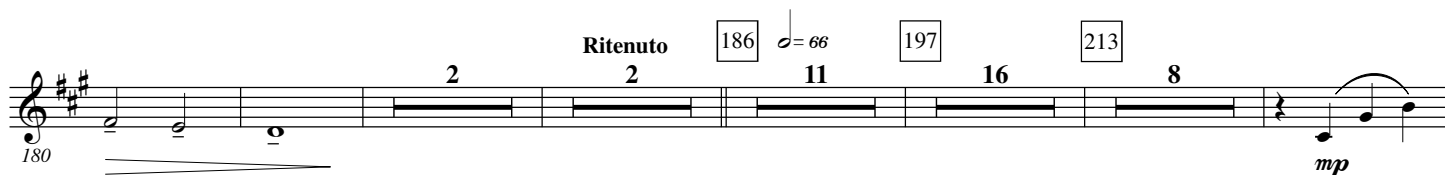
140



154



166



256 *mf*

260 8 *ff*

269 3

274 3 *ff* *f*

280

286 *ff*

295 5 *f* 3 3 3 3 3 3 3 3 *p*

306 *f*

313 *f* *mf*

324 5 6 8 ♩ = 58

325 *mp* 16 *p* *mf* *p*

342

349 4 *ff*

358 360 *f*

365 *ff* *poco ritenuto* 2 2

376 *pp* *p*

386 *ff*

393 *poco ritenuto* 8

408 *f* *mf* *f* *mf*

416 *f*

420

426 *ff*

440 *p* *mf*

463 *mp*

471 *mp* 4

479 *mf*

482

485

487 7 494  $\text{♩} = 136$  2

496 *f*

502 *f*

507

513 *ff*

520 *p*

524

528 *mp*

534

543  $\text{♩} = 72$

540

*ff*

547

557

567

566

*ff*

584 15 599

576

*ff*

Slower 7 Ben ritenuto 8

600