

Tribute to the Valley of Aosta

"ITINERANCES TEMPORELLES"

Symphonic poem

André WAIGNEIN

B \flat Trombone 1

Tribute to the Valley of Aosta

B \flat Trombone 1

"ITINERANCES TEMPORELLES"

André WAIGNEIN

Symphonic poem

18 19 14 33 10

$\text{♩} = 66$

ppp *crescendo*

47

poco accelerando

55 $\text{♩} = 72$ *ff*

65 75 95 6 20 *pp* *pp*

99

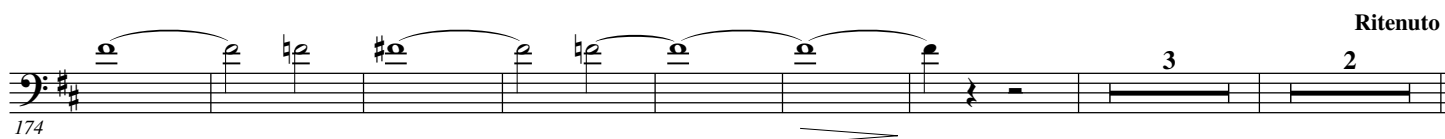
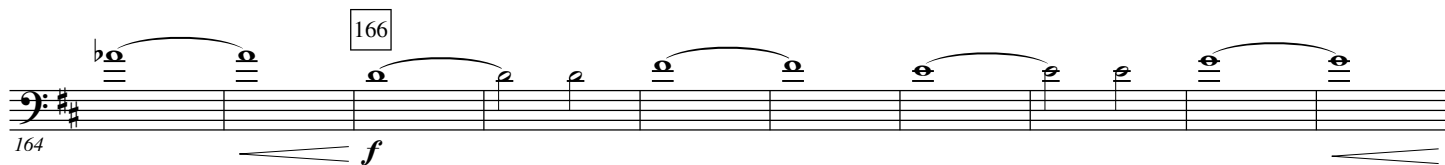
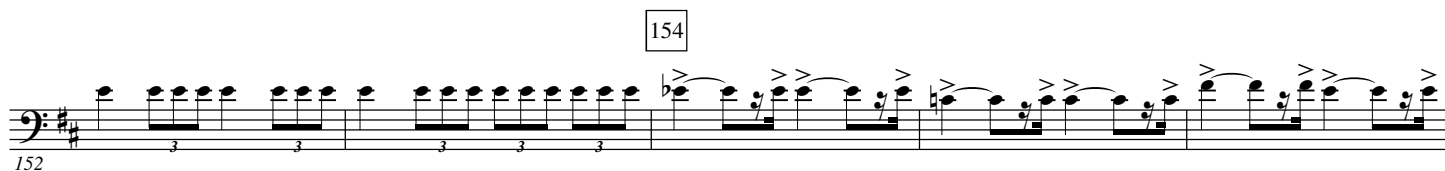
111 *mf*

poco accelerando 125 $\text{♩} = 76$ *ff*

122

128

132



4.

- B \flat Trombone 1 -

221 *mf*

poco ritenuto 228 $\bullet = 116$ *f*

230

236 *ff*

241 *ff*

246 *mp*

253

257 *f*

263

270 *ff*

278 *f*

286 *f*

297 *mp* *f*

305 *p* *mf*

312 *f* *mf* *p*

321 *mp*

341 *mf* *p* *f*

354 *ff* *f*

363 *ff*

372 *p* poco ritenuto 376 ♩ = 76 8

6.

- B \flat Trombone 1 -

384 *p* *ff* 386 $\bullet = 84$

392 *poco ritenuto*

400 *mp* *mf* 400 $\bullet = 138$

407 *f* *mf* *f*

414 *mf* *f* 416

419

423 *ff* 426

427 *fp* *ff* *fp* *f*

The musical score for the bass line of 'The Rose Tree' is presented in two systems. The first system, starting at measure 436, is in 3/4 time and features a key signature of two sharps (F# and C#). It includes a melodic line with a slur over measures 436-438 and a fermata over measure 439. The second system, starting at measure 440, is in 3/4 time and features a key signature of one sharp (F#). It includes a melodic line with a slur over measures 440-442 and a fermata over measure 443. The score is marked with a piano (*p*) dynamic at the beginning of the second system and a mezzo-forte (*mf*) dynamic at the end of the second system. The score is numbered 436 and 440 at the beginning of the first and second systems, respectively.

463 $\bullet = 69$



463 *mf*

470 471 *mp*

486

487

3

f

p

494

♩ = 136

2

f

497

503

503

f

ff

509

The image shows a musical score for the bass line of 'The Rose Tree'. The key signature is one sharp (F#), and the time signature is common time (C). The score begins with a treble clef and a key signature of one sharp. The melody starts on a G4, followed by a series of eighth and sixteenth notes, including a triplet of eighth notes. There are several slurs and accents throughout the piece. The score ends with a double bar line and a common time signature.

515

524 524 *p* *mp*

531

537

543 543 $\text{♩} = 72$ *f*

548

553

558

563 567 *ff*

569

581 584 *pp*

599 599 *ff* **Slower 7** **Ben ritenuto 8**