

Tribute to the Valley of Aosta

"ITINERANCES TEMPORELLES"

Symphonic poem

André WAIGNEIN

B \flat Trombone 1

Dedicated to Yves SEGERS, conductor of the Royal Symphonic Band of the Belgian Guides (Belgium)

Tribute to the Valley of Aosta

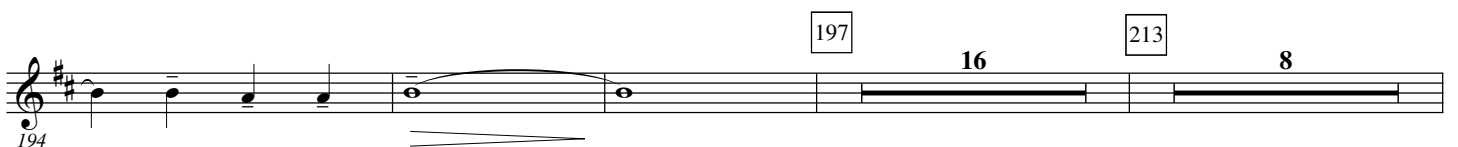
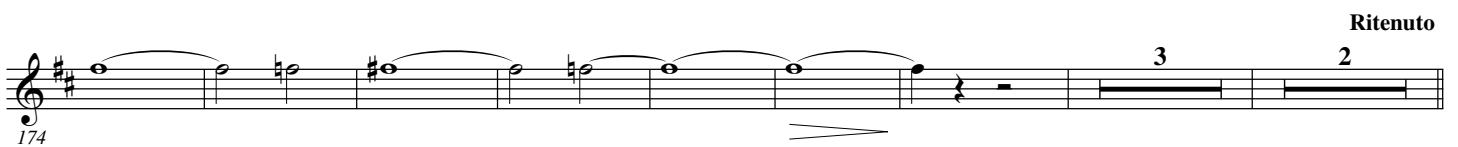
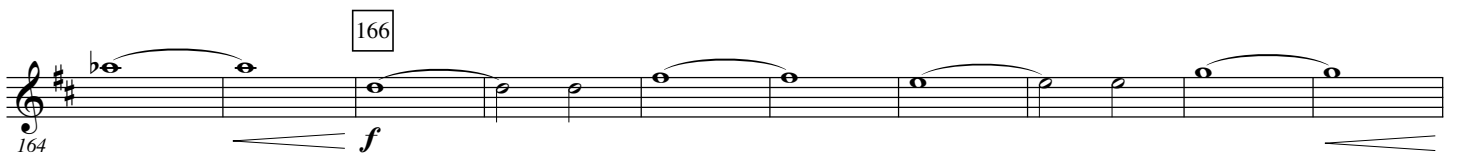
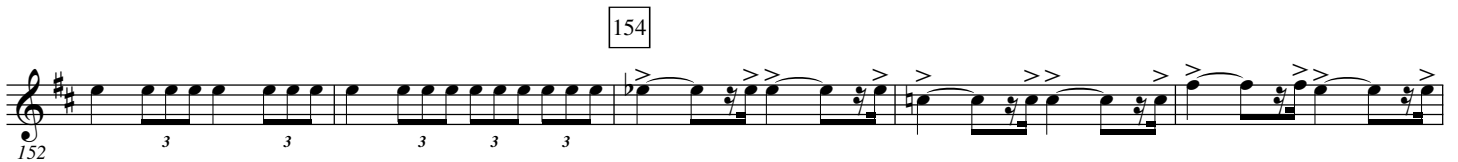
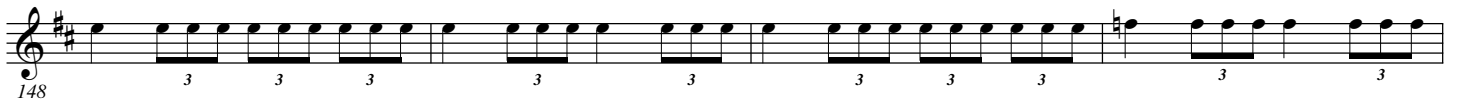
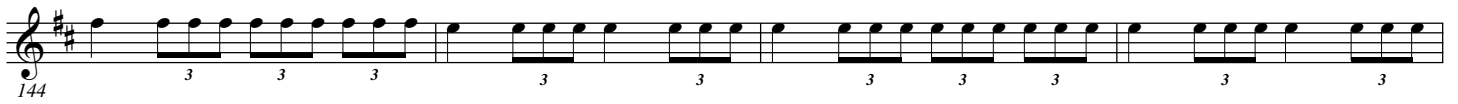
B \flat Trombone 1

"ITINERANCES TEMPORELLES"

André WAIGNEIN

Symphonic poem

Musical score for "The Swan" by Camille Saint-Saëns, featuring a piano and a vocal soloist. The score includes measures 18-10, 19-33, 47-55, 65-75, 95-111, 122-125, and 128-132. It includes tempo markings like "poco accelerando" and "crescendo", and dynamic markings like "ppp", "ff", "mf", and "pp".



221 *mf*

poco ritenuto 228 $\bullet = 116$

f

230

236 *ff*

241 *ff*

246 *mp*

253

257 *f*

263

270 *ff*

276

278 *f*

286 *f*

297 *mp* *f*

305 *p* *mf*

312 *f* *mf* *p*

321 *mp*

341 *mf* *p* *f*

354 *ff* *f*

363 *ff*

372 *p* poco ritenuto 376 ♩ = 76 8

384 *p* **386** $\bullet = 84$ *ff*

392 *poco ritenuto*

400 *mp* **400** $\bullet = 138$ *mf*

407 *f* *mf* *f*

414 *mf* **416** *f*

419

423 **426** *ff*

427 *fp* *ff* *fp* *f*

436 440 16 3

p *mf*

463 ♩ = 69

mf

471

mp

479

p *mf*

487 494 ♩ = 136

f *p* *f*

497

503

f *ff*

509

515

524 524

524 *p* *mp*

531

531

537

537

543 543 $\text{♩} = 72$

543 *f*

548

548

553

553

558

558

563 567

563 *ff*

569

569

581 584

581 *pp*

599 599

599 *ff* Slower 7 Ben ritenuto 8